

PRICE LIST



PRICE LIST NO. 718
w.e.f. 1st AUGUST 2024
Subject to change without prior notice

WORK HOLDING EQUIPMENTS





Size in mm	Price Each Rs.	Std. Pkg.
------------	----------------	-----------

APEX CODE 701 Tilting & Swiveling Vice		
100	13626/-	1
150	23850/-	1
200	43365/-	1
SG 701 S.G. Iron Body		
100	15873/-	1
150	26640/-	1
200	48072/-	1

Now in Dovetailed Slide

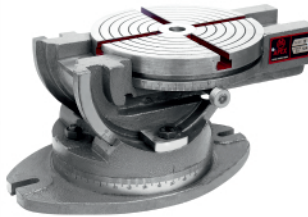


Size in mm	Price Each Rs.	Std. Pkg.
------------	----------------	-----------

APEX CODE 703 P Milling Machine Vice (Plain Model)		
75	6213/-	2
100	10701/-	2
125	14568/-	1
150	16665/-	1
160	19335/-	1
200	32094/-	1
250	54054/-	1
300	76017/-	1
SG 703 P S.G. Iron Body (Plain Model)		
75	7668/-	2
100	12951/-	2
125	16755/-	1
150	18954/-	1
160	22236/-	1
200	36417/-	1
250	55872/-	1
300	78570/-	1



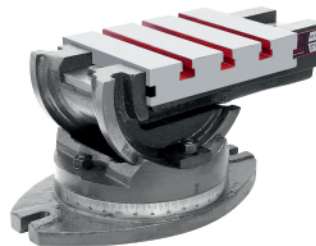
APEX CODE SG 701 A Universal Machine Vice S.G. Iron Body		
100	20481/-	2
150	28923/-	1



APEX CODE 704 Compound Angle Table (Round Table)		
225	26712/-	1



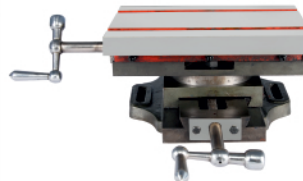
APEX CODE 702 Shaper Vice Swivel Model (With Serrated Jaws)		
150	15555/-	1
200	32580/-	1
250	48687/-	1
300	66894/-	1



APEX CODE 704 R Compound Angle Table (Rectangular Table)		
225x175	27423/-	1



APEX CODE 702 P Shaper Vice Plain Model (With Serrated Jaws)		
150	12057/-	1
200	23967/-	1
250	35658/-	1
300	48009/-	1



APEX CODE 705 D Compound Sliding Table (With Swivel Graduated Base)		
300x200	19785/-	1

Now in Dovetailed Slide



APEX CODE 703 Milling Machine Vice (Swivel Model)		
75	8004/-	2
100	12732/-	2
125	16317/-	1
150	22038/-	1
160	26319/-	1
200	41667/-	1
250	70383/-	1
300	95721/-	1
SG 703 S.G. Iron Body		
75	8778/-	2
100	15417/-	2
125	18765/-	1
150	25269/-	1
160	30264/-	1
200	47808/-	1
250	72450/-	1
300	98940/-	1



APEX CODE 706 Compound Sliding Table (With Swivel Graduated Base)		
150x150	9057/-	2
200x200	10179/-	1




Size in mm	Price Each Rs.	Std. Pkg.
150x150	5121/-	3
200x200	5595/-	3

APEX CODE 706 S
Single Sliding Table
(With 3/8" cross slots)



Size in mm	Price Each Rs.	Std. Pkg.
300x200	22569/-	1

APEX CODE 707
Compound Sliding Table
(With calibrated wheels & swivel graduated base)



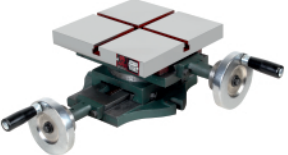
Size in mm	Price Each Rs.	Std. Pkg.
300 x 300	25251/-	1
300 x 500	53049/-	1
400 x 400	61401/-	1

APEX CODE 707A
Compound Sliding Table (with calibrated wheels & swivel graduated base)



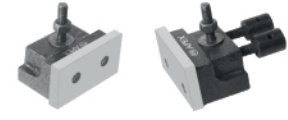
Size in mm	Price Each Rs.	Std. Pkg.
300 x 300	25251/-	1
300 x 500	53049/-	1
400 x 400	61401/-	1

APEX CODE 707T
Compound Sliding Table (with calibrated wheels & swivel graduated base)



Size in mm	Price Each Rs.	Std. Pkg.
150 x 150	10020/-	2
200 x 200	11037/-	1
250 x 250	18696/-	1

APEX CODE 708
Compound Sliding Table (with calibrated wheels & swivel graduated base)




Size in mm	Price Each Rs.	Std. Pkg.
150 x 150	1377/-	4
200 x 200	1251/-	4
300 x 200	1377/-	4
300 x 300	1377/-	4
400 x 400	3762/-	4
300 x 500	3762/-	4

APEX CODE 708J
Jaws for Compound Sliding Tables (PAIR)




Size in mm	Price Each Rs.	Std. Pkg.
150 x 150	6306/-	3
200 x 200	7020/-	3

APEX CODE 708S
Single Sliding Table
(With calibrated wheels)



Size in mm	Price Each Rs.	Std. Pkg.
100	12834/-	1
125	20490/-	1
150	26901/-	1
200	55023/-	1

APEX CODE 709
Standard Machine Vice



Size in mm	Price Each Rs.	Std. Pkg.
80	1707/-	6
100	2847/-	4
125	4017/-	3
150	5694/-	2

APEX CODE 710
Unigrip Machine Vice
(Cast Iron Frame)

SG 710
S.G. Iron Body

Size in mm	Price Each Rs.	Std. Pkg.
80	1986/-	6
100	3150/-	4
125	4458/-	3
150	6297/-	2



S.G. Iron


Size in mm	Price Each Rs.	Std. Pkg.
175 x 250	16497/-	1

APEX CODE 711
Vertical Sliding Table
(With calibrated wheels & Swivel calibrated base)



Size in mm	Price Each Rs.	Std. Pkg.
100	5556/-	3
150	12714/-	2
200	25035/-	1

APEX CODE 712
Drill Vice
(Deluxe Model)



Size in mm	Price Each Rs.	Std. Pkg.
75	2289/-	6
100	3321/-	4
125	4731/-	4
150	7140/-	4
200	12060/-	2

APEX CODE 713
Drill Machine Vice

SG 713
S.G. Iron Body

Size in mm	Price Each Rs.	Std. Pkg.
75	2472/-	6
100	3648/-	4
125	5226/-	4
150	8109/-	4
200	13515/-	2
250	23658/-	1
300	29067/-	1



Size in mm	Price Each Rs.	Std. Pkg.
75	2199/-	6
100	2904/-	4
125	3924/-	4
150	4773/-	4
200	8958/-	2

APEX CODE 713 E
Drill Machine Vice (Economy Model)
Unbreakable S.G. Iron Body



Size in mm	Price Each Rs.	Std. Pkg.
------------	----------------	-----------

APEX CODE SG 714
Machinist Bench Vice (Fixed Base)
Unbreakable S.G. Iron Body

75	1755/-	6
100	3492/-	4
115	4020/-	2
125	5253/-	2
150	6300/-	2
200	9522/-	1
250	15930/-	1
300	19722/-	1
400	27168/-	1



APEX CODE SG 714S
Machinist Bench Vice (Swivel Base)
Unbreakable S.G. Iron Body

75	2316/-	6
100	4236/-	4
125	6540/-	2
150	7686/-	2
200	11946/-	1
250	17043/-	1
300	20745/-	1



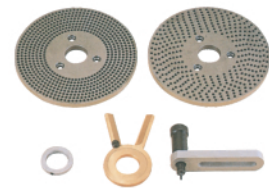
APEX CODE 715
Rotary milling Table (Plain Model)

150	11394/-	2
200	14505/-	1
250	19821/-	1
300	30357/-	1
375	52317/-	1
450	89058/-	1
500	97650/-	1



APEX CODE 715E
Universal Rotary milling Table
(Horizontal & Vertical)

100	7476/-	2
150	11976/-	2
200	17190/-	1
250	23388/-	1
300	36537/-	1
375	54603/-	1
450	95958/-	1
500	104013/-	1



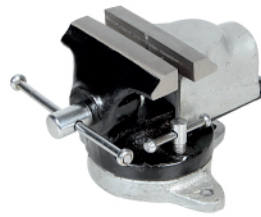
APEX CODE 715H
Indexing Device
(For Code 715 & 715E)

Small H-1		
150	5340/-	4
200	5340/-	4
250	5340/-	4
Large H-2		
300	7575/-	4
375	7575/-	4
450	7575/-	4
500	7575/-	4



APEX CODE 716
Table Vice (Fixed base)

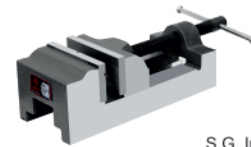
30	333/-	12
40	405/-	12
50	423/-	12
60	591/-	8
75	858/-	8



Size in mm	Price Each Rs.	Std. Pkg.
------------	----------------	-----------

APEX CODE 716S
Table Vice
Swivel Base

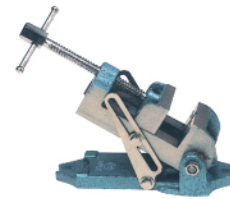
30	435/-	12
40	474/-	12
50	552/-	12
60	837/-	8
75	1155/-	8



S.G. Iron

APEX CODE 717
Empire Machine Vice

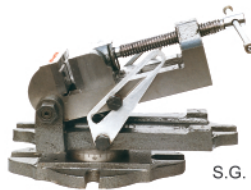
40	651/-	8
60	1872/-	6
75	3162/-	6
100	5091/-	4



S.G. Iron

APEX CODE 717A
Empire Angle Machine Vice

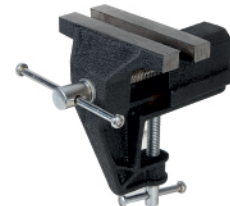
60	3174/-	6
75	4788/-	4



S.G. Iron

APEX CODE 717 AS
Empire Angle Machine Vice
(With graduated Swivel Base)

60	4023/-	4
75	5799/-	4



APEX CODE 718
Table vice

25	252/-	20
40	258/-	20
50	285/-	20
60	339/-	10
75	405/-	10
100	501/-	06



APEX CODE 719
Preci Self Centering Vice
(Swivel Base)
Unbreakable S.G. Iron Body

100	9717/-	1
150	18573/-	1



APEX CODE 719P
Preci Self Centering Vice
(Plain Model)
Unbreakable S.G. Iron Body

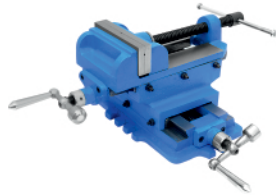
100	8034/-	1
150	14076/-	1



Size in mm	Price Each Rs.	Std. Pkg.
------------	----------------	-----------

APEX CODE SG 720
Precision Machine Vice
(Swivel Base)
S.G. Iron Body

100	9213/-	2
150	17010/-	1



APEX CODE 721
Universal Compound Vice
Unbreakable S.G. Iron Body

100	11001/-	1
125	13923/-	1

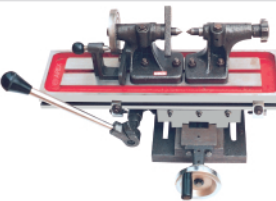
S.G. Iron



APEX CODE 722
Profiling Milling & Slotting Slide

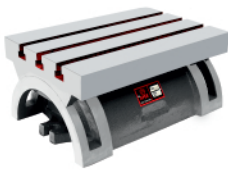
450 x 125	23454/-	1
-----------	---------	---

S.G. Iron



APEX CODE 722D
Profiling Milling & Slotting Slide
with Indexing Dividing Head
and Tail Stock

450 x 125	28413/-	1
-----------	---------	---



APEX CODE 723
Tilting Table
(Graduated)

125 x 175	10782/-	2
175 x 250	17211/-	1
250 x 375	35727/-	1



APEX CODE 723S
Tilting Table
(With Swivel Base)

125 x 175	16854/-	2
175 x 250	24279/-	1
250 x 375	57054/-	1



APEX CODE 724
Self Centering Shaft Vice

10 to 80	23643/-	1
50 to 150	52923/-	1



APEX CODE SG 725
Drill Press Vice (German Type)
S.G. Iron Body

75	1932/-	6
100	2631/-	4
125	3486/-	4
150	4356/-	2
200	7005/-	2



APEX CODE 726
Hand Vice Steel

75	144/-	20
100	189/-	20
125	240/-	20
150	288/-	20
200	525/-	10



APEX CODE 727
Draw Vice Steel

150	1155/-	10
200	1644/-	10
250	2544/-	6
300	3066/-	6

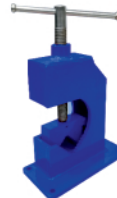


APEX CODE 728
Pipe Vice (Open Type)

3-30	1989/-	6
5-50	3150/-	4
5-75	5514/-	3
5-100	7089/-	2
50-150	17325/-	1
50-200	36225/-	1

SG 728
S.G. Iron Body

5-50	2883/-	4
5-75	4887/-	3
5-100	6696/-	2
50-150	14658/-	1



APEX CODE 728S
Fabricated Steel Pipe Vice (Open Type)

50	3048/-	4
75	4320/-	4
100	7710/-	3

New



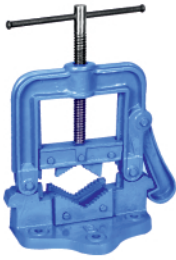
APEX CODE 729
Chain Pipe Vice

50	831/-	6
75	1188/-	6
100	1587/-	4
150	3066/-	3
200	4290/-	2

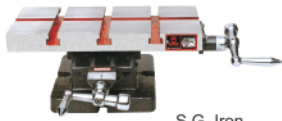


APEX CODE 730
3 Way Universal Tilt &
Swivel Angle Vice

100	19761/-	1
150	41373/-	1



Size in mm	Price Each Rs.	Std. Pkg.
APEX CODE 731 Hinged Pipe Vice SG Iron Body		
40	1284/-	8
50	1626/-	8
60	2256/-	4
85	3417/-	3
115	4665/-	2
150	10089/-	2



S.G. Iron

Size in mm	Price Each Rs.	Std. Pkg.
APEX CODE 732 Compound Sliding Table (With Calibrated Wheel)		
300 x 150	11805/-	1



Size in mm	Price Each Rs.	Std. Pkg.
APEX CODE 733 Table Vice with Clamp (Deluxe Model)		
30	321/-	20
40	414/-	20
50	429/-	20
60	594/-	20
75	885/-	10



Size in mm	Price Each Rs.	Std. Pkg.
APEX CODE 733S Table Vice with Clamp (Swivel Base) (Deluxe Model)		
30	456/-	20
40	483/-	20
50	567/-	20
60	852/-	10
75	1224/-	10



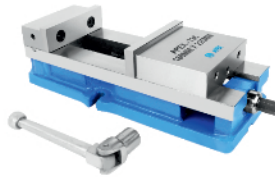
Size in mm	Price Each Rs.	Std. Pkg.
APEX CODE SG 734 Cross Rib Bench Vice (Fixed Base) S.G. Iron Body		
75	1797/-	8
100	3036/-	4
125	4593/-	4
150	7311/-	2
200	11316/-	1



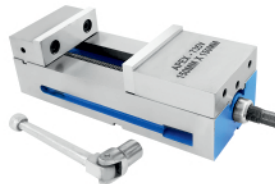
Size in mm	Price Each Rs.	Std. Pkg.
APEX CODE SG 734S Cross Rib Bench Vice (Swivel Base) S.G. Iron Body		
75	2547/-	6
100	4017/-	4
125	6063/-	3
150	9750/-	2
200	15315/-	1



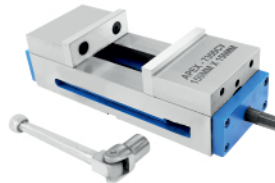
Size in mm	Price Each Rs.	Std. Pkg.
APEX CODE 735 Tilt Lock Machine Vice Swivel Model (S.G. Iron Body)		
Jaw Width in mm	Opening in mm	
100	150	18279/- 1
125	150	21390/- 1
150	175	27402/- 1
160	225	29634/- 1
200	250	49704/- 1
200	300	51081/- 1
310	400	83010/- 1



Size in mm	Price Each Rs.	Std. Pkg.
APEX CODE 735P Tilt Lock Machine Vice Plain Model (S.G. Iron Body)		
Jaw Width in mm	Opening in mm	
100	150	15426/- 1
125	150	15678/- 1
150	175	20541/- 1
160	225	22740/- 1
200	250	39177/- 1
200	300	40434/- 1
310	400	79335/- 1



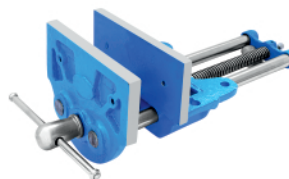
Size in mm	Price Each Rs.
APEX CODE 735 V Precision Tilt Lock Machine Vice	
150mm	23700/-



Size in mm	Price Each Rs.
APEX CODE 735 SCV Self Centering Tilt Lock Machine Vice	
150	24732/-



Size in mm	Price Each Rs.	Std. Pkg.
APEX CODE SG 736 Machine Clamps (Pair) Unbreakable S.G. Iron Body		
60	4263/-	2
75	7329/-	2
100	19833/-	1



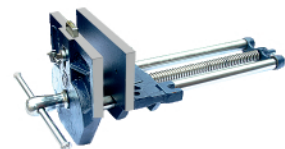
Size in mm	Price Each Rs.	Std. Pkg.
APEX CODE 737 Wood Working Vice		
150	2280/-	6
175	3537/-	4
200	4581/-	3
225	6702/-	3



Size in mm	Price Each Rs.	Std. Pkg.
------------	----------------	-----------

APEX CODE 737QR
Quick Release Wood Working Vice

150	2841/-	6
175	4098/-	4
200	5295/-	3
225	7455/-	3



APEX CODE 738
Wood Worker's Vice (with front dog)

175	4284/-	4
200	5022/-	3
225	7602/-	3



APEX CODE 738QR
Quick Release Wood Worker's Vice (with front dog)

175	4635/-	4
200	5424/-	3
225	8100/-	3



APEX CODE 739
Quick Action Bench Vice (Double Rib)
Unbreakable S.G. Iron Body

100	8412/-	3
115	9411/-	3
125	12078/-	2
150	14325/-	2



APEX CODE 740
Heavy Duty Bench Vice Deluxe (Double Rib)
Unbreakable S.G. Iron Body

80	2730/-	4
90	4002/-	4
100	5802/-	3
115	7293/-	3
125	8502/-	2
150	11283/-	2
200	16260/-	1



APEX CODE 740S
Heavy Duty Bench Vice Deluxe (Double Rib) Swivel Base
Unbreakable S.G. Iron Body

80	4056/-	4
90	5061/-	4
100	7605/-	3
115	8781/-	3
125	10731/-	2
150	13920/-	2
200	21570/-	1



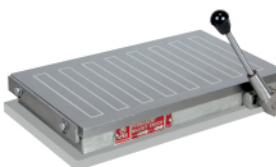
APEX CODE 741
Mechanic's Bench Vice (Fixed Base)
Unbreakable S.G. Iron Body

60	1284/-	6
65	1524/-	6
80	2076/-	6
90	2943/-	4
100	5172/-	4
115	5532/-	4
125	6894/-	2
150	8625/-	2
200	13809/-	1
250	25812/-	1
300	29127/-	1



APEX CODE 741S
Mechanic's Bench Vice (Swivel Base)
Unbreakable S.G. Iron Body

65	2295/-	6
80	3240/-	6
90	4263/-	4
100	7020/-	3
115	7413/-	3
125	9447/-	2
150	11706/-	2
200	18747/-	1



APEX CODE 742F
Permanent Magnetic Chuck Fine Pole (Rectangular)

100 x 150	8871/-	2
100 x 200	9978/-	2
125 x 250	14532/-	2
150 x 250	16008/-	2
150 x 300	18747/-	1
150 x 350	20622/-	1
150 x 400	22683/-	1
150 x 450	28011/-	1
150 x 600	45981/-	1
200 x 300	22500/-	1
200 x 350	24756/-	1
200 x 400	29865/-	1
200 x 450	39477/-	1
200 x 500	47496/-	1
200 x 600	62814/-	1
250 x 600	78804/-	1
300 x 600	97797/-	1
250 x 750	127818/-	1
300 x 750	148824/-	1



APEX CODE 742T
Permanent Magnetic Chuck Through Pole (Rectangular)

100 x 150	12087/-	2
100 x 200	13182/-	2
125 x 250	18129/-	1
150 x 300	24174/-	1
150 x 350	27204/-	1
200 x 350	29523/-	1
150 x 400	29934/-	1
200 x 400	33384/-	1
150 x 450	35250/-	1
200 x 450	49113/-	1
200 x 500	57267/-	1
250 x 500	74520/-	1



Size in mm	Price Each Rs.	Std. Pkg.
150	13536/-	1
200	17700/-	1
225	19941/-	1
250	22506/-	1
300	29343/-	1
350	50358/-	1
400	77718/-	1
450	93216/-	1



Size in mm	Price Each Rs.	Std. Pkg.
100	5364/-	3
125	9009/-	2
150	17457/-	2



Size in mm	Price Each Rs.	Std. Pkg.
100	15648/-	2
150	26949/-	1
200	45864/-	1



Size in mm	Price Each Rs.	Std. Pkg.
100	10431/-	2
150	19491/-	1
200	34398/-	1



Size in mm	Price Each Rs.		Std. Pkg.
	Bronze Nut	FG Nut	
50	1653/-	1419/-	6
60	2379/-	2049/-	6
75	3609/-	3084/-	4
100	6870/-	5961/-	3
125	9174/-	7974/-	2
150	11439/-	9963/-	1



Size in mm	Price Each Rs.	Std. Pkg.
35	969/-	8
50	1281/-	6
75	2112/-	4
100	2862/-	3
150	6192/-	2



Size in mm	Price Each Rs.	Std. Pkg.
35	1725/-	8
50	2199/-	6
75	3564/-	4
100	6564/-	2



Size in mm	Price Each Rs.	Std. Pkg.
100	14757/-	2
150	27927/-	1
200	52182/-	1

SG 748
S.G. Iron Body

100	16278/-	2
150	35088/-	1
200	65457/-	1



Size in mm	Price Each Rs.	Std. Pkg.
100	12390/-	2
150	20616/-	1
200	39420/-	1

SG 748P
S.G. Iron Body

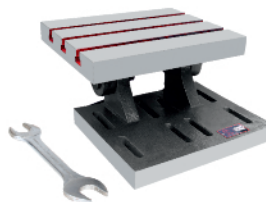
100	13641/-	2
150	22026/-	1
200	41982/-	1



Size in mm	Price Each Rs.	Std. Pkg.
100	17814/-	1
150	29418/-	1

SG 749
S.G. Iron Body

100	19530/-	1
150	32964/-	1



Size in mm	Price Each Rs.	Std. Pkg.
125 x 150	6153/-	2
150 x 200	7692/-	2
200 x 250	15372/-	1
250 x 300	28032/-	1
300 x 375	46767/-	1



Size in mm	Price Each Rs.	Std. Pkg.
APEX CODE 751 Plain Angle Plates Machined		
50x50x50	573/-	6
75x75x75	903/-	6
100x100x100	1656/-	6
125x125x125	2763/-	4
150x150x150	4422/-	3
200x200x200	9393/-	2
250x250x250	16029/-	1
300x300x300	25956/-	1

Size in mm	Price Each Rs.	Std. Pkg.
APEX CODE 752 Plain Angle Plates Precision Ground		
50x50x50	705/-	6
75x75x75	1080/-	6
100x100x100	1821/-	6
125x125x125	3033/-	4
150x150x150	4851/-	3
200x200x200	10311/-	2
250x250x250	17586/-	1
300x300x300	28482/-	1



Size in mm	Price Each Rs.	Std. Pkg.
APEX CODE 753 Slotted Angle Plates Machined (Webbed End)		
90x75x65	1239/-	6
115x90x75	1383/-	6
150x125x115	2583/-	6
175x140x115	3795/-	4
200x150x125	4392/-	4
225x175x150	7131/-	3
250x200x150	8259/-	2
300x225x200	14406/-	1



Size in mm	Price Each Rs.	Std. Pkg.
APEX CODE 753G Slotted Angle Plates Precision Ground (Webbed End)		
90x75x65	1491/-	6
115x90x75	1755/-	6
150x125x115	3156/-	6
175x140x115	4617/-	4
200x150x125	5166/-	4
225x175x150	8178/-	3
250x200x150	9750/-	2
300x225x200	16200/-	1

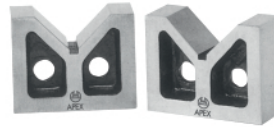


Size in mm	Price Each Rs.	Std. Pkg.
APEX CODE 754 Slotted Angle Plates Machined (Open End)		
115x90x75	1383/-	6
150x125x115	2586/-	6
175x140x115	4365/-	4
200x150x125	4392/-	4
225x175x150	7131/-	3
250x200x150	8670/-	2
300x225x200	17388/-	1

Size in mm	Price Each Rs.	Std. Pkg.
APEX CODE 754G Slotted Angle Plates Precision Ground (Open End)		
115x90x75	1755/-	6
150x125x115	3156/-	6
175x140x115	4617/-	4
200x150x125	5166/-	4
225x175x150	8175/-	3
250x200x150	9750/-	2
300x225x200	18714/-	1



Size in mm	Price Each Rs.	Std. Pkg.
APEX CODE 755 Giant Slotted Angle Plates Machined		
400x300x225	20214/-	1
500x400x300	39774/-	1
600x600x450	104979/-	1



Size in mm	Price Each Rs.	Std. Pkg.
APEX CODE 756 C.I. Vee Blocks Machined (PAIR) Without Clamp		
50x32x47	987/-	6
75x60x65	1890/-	6
100x65x80	3000/-	6
125x80x100	4734/-	6
150x88x125	8310/-	3
175x113x150	12327/-	2
200x138x200	18894/-	1
250x163x250	29295/-	1
300x200x300	35910/-	1



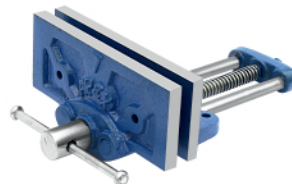
Size in mm	Price Each Rs.	Std. Pkg.
APEX CODE 756G C.I. Vee Blocks Precision Ground (PAIR) With One Clamp		
50x38x38	1548/-	6
75x38x38	1932/-	6
75x50x50	2217/-	6
100x38x75	2778/-	6
100x63x63	4122/-	4
100x75x75	4176/-	4
125x44x88	4878/-	4
150x50x100	5469/-	3
150x100x100	10611/-	3



Size in mm	Price Each Rs.	Std. Pkg.
APEX CODE 757 Tool Maker's Bench Vice (Fixed Base)		
75	2607/-	6
90	3597/-	4
100	6618/-	3
125	8721/-	2
150	11493/-	2
200	17442/-	1



Size in mm	Price Each Rs.	Std. Pkg.
APEX CODE 757S Tool Maker's Bench Vice (Swivel Base)		
90	4809/-	4
100	8541/-	3
125	11727/-	2
150	15081/-	2
200	22227/-	1



Size in mm	Price Each Rs.	Std. Pkg.
APEX CODE 758 Economy Wood Worker's Vice		
150	1140/-	10
175	1515/-	8
200	2478/-	8
225	3258/-	4
250	3762/-	4
300	4143/-	3



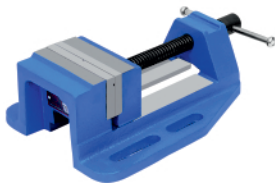
APEX CODE 759
All Steel Bench Vice
(Fixed Base)

Size in mm	Price Each Rs.	Std. Pkg.
75	2274/-	6
100	3414/-	3
125	5256/-	2
150	6465/-	2
200	11148/-	2



APEX CODE 759S
All Steel Bench Vice
(Swivel Base)

Size in mm	Price Each Rs.	Std. Pkg.
75	2859/-	6
100	4044/-	4
125	5985/-	3
150	8184/-	2
200	13116/-	2



APEX CODE SG 760
Heavy Duty Drill Vice
S.G. Iron Body

Size in mm	Price Each Rs.	Std. Pkg.
75	2427/-	4
100	4365/-	3
150	8733/-	2



APEX CODE 761
Low Height Milling Machine Vice
Fixed Base (Open Screw)
Unbreakable S.G. Iron Body

Size in mm	Price Each Rs.	Std. Pkg.
100	5784/-	2



APEX CODE 762
Super Opening Adjustable
2-Piece Milling Vice
Unbreakable S.G. Iron Body

Size in mm	Price Each Rs.	Std. Pkg.
150	11313/-	2



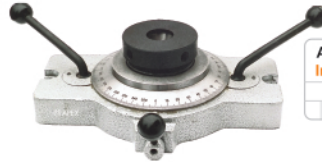
APEX CODE 764
Dial Comparator Stand
(Supplied without dial gauge)

Size in mm	Price Each Rs.	Std. Pkg.
3 75	9663/-	1
8 60	4734/-	1
5 45	9297/-	1



APEX CODE 765
Tilting Indexing Device
(With 3 Jaws Chuck Mounting)

Size in mm	Price Each Rs.	Std. Pkg.
100	41556/-	1
200	78609/-	1



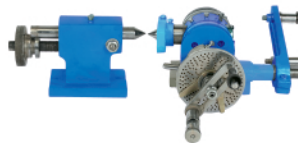
APEX CODE 766
Indexing Collet Fixture

Size in mm	Price Each Rs.	Std. Pkg.
A-25	18018/-	1
A-42	18222/-	1



APEX CODE 767
Indexing Milling Fixture

Size in mm	Price Each Rs.	Std. Pkg.
100	32829/-	1
150	32973/-	1



APEX CODE 768
Universal Dividing Head
Centre Height

Size in mm	Price Each Rs.	Std. Pkg.
115	34506/-	1
127	46680/-	1
140	49509/-	1
165	58344/-	1
190	67095/-	1



APEX CODE 769
Magnetic V-Blocks Soft (Pair)

Size in mm	Price Each Rs.	Std. Pkg.
65x60x50	8433/-	2
80x65x60	10272/-	2
100x95x75	14148/-	2
150x95x75	22011/-	1
200x150x100	65913/-	1



APEX CODE 769H
Magnetic V-Blocks Hardened (Pair)

Size in mm	Price Each Rs.	Std. Pkg.
80x65x60	15258/-	2
100x95x75	22407/-	2
150x95x75	33705/-	1
200x150x100	94080/-	1



APEX CODE SG 770
Collet Fixture
(For Traub A-25, A-42 & Herbert-2D Collets)

Size in mm	Price Each Rs.	Std. Pkg.
A-25	5139/-	2
A-42	5859/-	2
H-2D	5859/-	2

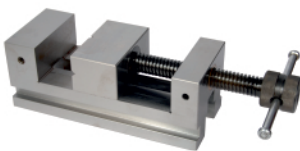


APEX CODE 774
Hi Grip Machine Vice
Swivel Model

Size in mm	Price Each Rs.	Std. Pkg.
100	17724/-	1
150	30873/-	1

SG 774
S.G. Iron Body

100	19404/-	1
150	31893/-	1

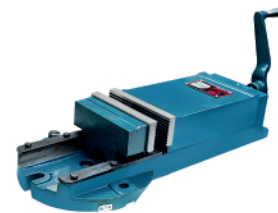


APEX CODE 771
All Steel Precision
Grinding Vice
(Carbon Steel Body)

75	14748/-	2
100	21519/-	2
150	51681/-	1

APEX CODE 771T
All Steel Precision
Grinding Vice
(Tool Steel Body)

75	20115/-	2
100	28941/-	2
150	65280/-	1

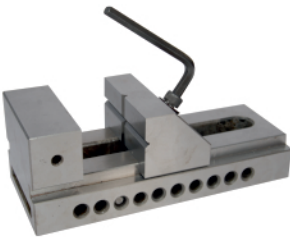


APEX CODE 774P
Hi Grip Machine Vice
Plain Model

100	13650/-	1
150	24012/-	1

SG 774P
S.G. Iron Body

100	14325/-	1
150	26196/-	1

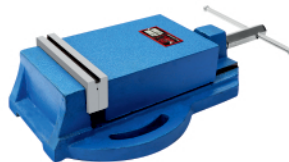


APEX CODE 772
Tools Maker's Precision
Screw Less Vice
(Carbon Steel Body)

75	8820/-	2
100	16467/-	2
150	42108/-	1

APEX CODE 772T
Tools Maker's Precision
Screw Less Vice
(Iron Steel Body)

75	17388/-	2
100	27456/-	2
150	58755/-	1



APEX CODE 775
Precision Drill Press Vice

100	4968/-	2
150	10314/-	1

SG 775
S.G. Iron Body

100	6552/-	2
150	12147/-	1



APEX CODE 773
Extra Grips Machine Vice
Swivel Model

100	13998/-	1
150	26478/-	1

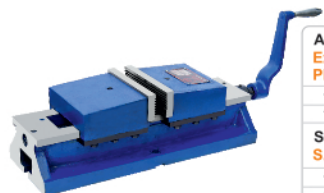
SG 773
S.G. Iron Body

100	15447/-	1
150	28011/-	1



APEX CODE 777
Stepped Angle Plates

75x75x75	8631/-	4
100x100x100	15510/-	4

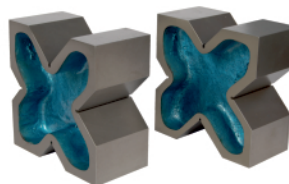


APEX CODE 773P
Extra Grips Machine Vice
Plain Model

100	12234/-	1
150	22614/-	1

SG 773P
S.G. Iron Body

100	12984/-	1
150	24828/-	1



APEX CODE 778
4 Way Vee Block
Cast Iron (PAIR)

35x95x70	3897/-
30x100x100	4437/-
35x120x120	6792/-
60x120x120	10584/-
75x150x150	14001/-
100x200x200	30519/-



Size in mm	Price Each Rs.	Std. Pkg.
---------------	-------------------	--------------

APEX CODE 779
Tool Maker's Vee Block & Clamping Sets-Precision (PAIR)

40	3366/-	3
45	4206/-	3
50	4263/-	3
60	5844/-	3
70	6081/-	3
75	8199/-	3
80	14346/-	2
100	15222/-	2



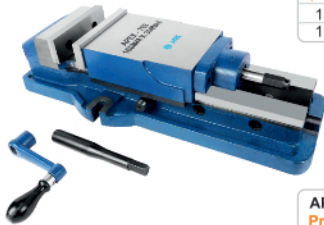
APEX CODE 780
Ultimate Vee Block & Clamping Set

90	6270/-	4
----	--------	---



APEX CODE 781
Micrometer Stand

3090/-	10
--------	----



APEX CODE 782
Precision Hydraulic Machine Vice (Swivel Base)

150 x 200	44286/-	1
150 x 300	47040/-	1



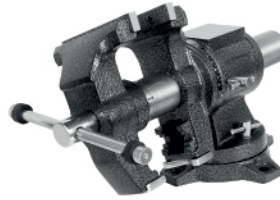
APEX CODE 782P
Precision Hydraulic Machine Vice (Plain Base)

150 x 200	40347/-	1
150 x 300	43101/-	1



APEX CODE 783
Indexing Milling Fixture - Horizontal & Vertical

80/100/125 mm with Chuck & with Tail Stock	49260/-
80/100/125 mm with Chuck & without Tail Stock	37638/-
160mm with Chuck & with Tail Stock	65331/-
160mm with Chuck & without Tail Stock	49209/-
200 mm with Chuck & with Tail Stock	71286/-
200 mm with Chuck & without Tail Stock	54951/-



APEX CODE SG 787
Multipurpose Vice S.G. Iron Body

To Suit T-Slot	Price Each Rs.	Std. Pkg.
100	4725/-	1
125	6525/-	
150	9900/-	



APEX CODE 788
Heavy Duty Precision Machine Swivel Model (S.G. Ductile Iron)

150	32610/-	1
-----	---------	---



APEX CODE 788P
Heavy Duty Precision Machine Plain Model (S.G. Ductile Iron)

150	27648/-	1
-----	---------	---



APEX CODE 789
Clamp Vice (For Hand Pump) M.S. Steel Body

50	4338/-	4
75	4899/-	4



APEX CODE 790
Precision Self Centering High Grip Shaft Vice

150	64650/-	1
-----	---------	---

Size in mm	Price Each Rs.	Std. Pkg.
---------------	-------------------	--------------



New

APEX CODE 791 Precision Self Centering High Grip Machine Vice		
150	62937/-	1



New

APEX CODE 792 Precision High Grip Machine Vice		
150	56133/-	1



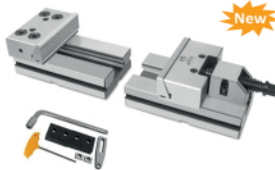
New

APEX CODE 793 High Precision Modular Vice Accuracy 0.02 MM Hardness 57-62 HRC		
100 x 165	37329/-	1
150 x 225	45180/-	1
150 x 300	51351/-	1



New

APEX CODE 794 High Precision Modular Vice With Parallel Top Jaws Accuracy 0.02 MM Hardness 57-62 HRC		
125 x 175	33528/-	1
150 x 225	39336/-	1
150 x 300	45993/-	1



New

APEX CODE 795 High Precision Two Piece Modular Vice Accuracy 0.02 MM Hardness 57-62 HRC		
150	58590/-	1



New

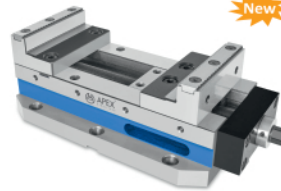
APEX CODE 796 Precision 5-Axis Machine Vice Accuracy 0.02 MM Hardness 60 ± 2 HRC		
80	53067/-	1
125	60261/-	1

Size in mm	Price Each Rs.	Std. Pkg.
---------------	-------------------	--------------



New

APEX CODE 797 Multi Grip Machine Vice With Serrated Slide Ways Accuracy 0.02 MM Hardness 60 ± 2 HRC		
70	78957/-	1



New

APEX CODE 798 Compact High Grip Vice Accuracy 0.02 MM Hardness 60 ± 2 HRC		
125	44043/-	1

900 Series Clamps & Clamping Elements

To Suit T-Slot	Price Each Rs.	Std. Pkg.
-------------------	-------------------	--------------



APEX CODE 901 Lever Clamp		
12-20	2445/-	4



APEX CODE 902 Flat Clamp			
902-8	8	741/-	10
902-10	10	777/-	10
902-12	12	966/-	10
902-14	14	966/-	10
902-16	16	1299/-	10
902-18	18	1299/-	10
902-20	20	2166/-	6
902-22	22	2379/-	6



APEX CODE 903 Taper Clamp			
903-8	8	753/-	10
903-10	10	795/-	10
903-12	12	1140/-	10
903-14	14	1140/-	10
903-16	16	1572/-	10
903-18	18	1572/-	10
903-20	20	2229/-	6
903-22	22	2454/-	6



		To Suit T-Slot	Price Each Rs.	Std. Pkg.
APEX CODE 904 Slot Clamp				
904-12	12		717/-	20
904-14	14		831/-	20
904-16	16		999/-	20
904-18	18		1140/-	10



		To Suit T-Slot	Price Each Rs.	Std. Pkg.
APEX CODE 905 Stepless Height Adjustable Clamp				
Clamp Height				
905-1212	50		1014/-	10
905-1414	50		1065/-	10
905-1616	65		1287/-	10
905A-1616	75		1683/-	10
905-1816	65		1614/-	10
905A-1816	75		2058/-	10
905-2020	85		2289/-	6
905-2220	95		2616/-	6



		To Suit T-Slot	Price Each Rs.	Std. Pkg.
APEX CODE 906 Down Thrust Clamp				
906-105	14 to 18		4254/-	4
906-135	14 to 18		5571/-	4
APEX CODE 906E Separate Cylinder				
906E-35			681/-	4
906E-75			1008/-	4



		To Suit T-Slot	Price Each Rs.	Std. Pkg.
APEX CODE 907 Low Height Clamp				
	12 to 18		2331/-	4



		To Suit T-Slot	Price Each Rs.	Std. Pkg.
APEX CODE 908 Low Down Thrust Clamp				
	12 to 16		2079/-	4



		To Suit T-Slot	Price Each Rs.	Std. Pkg.
APEX CODE 909 Step Block Universal (PAIR)				
Height Max				
909-1	53		489/-	10
909-2	105		783/-	10
909-3	208		1746/-	10



		To Suit T-Slot	Price Each Rs.	Std. Pkg.
APEX CODE 909S Step Block Set				
909S-16 Pcs.			7281/-	4
909-1	909-2		909-3	
(4 Pairs)	(2Pairs)		(2Pairs)	



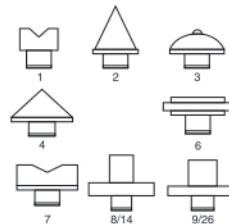
		To Suit T-Slot	Price Each Rs.	Std. Pkg.
APEX CODE 910 Height Plates Adjustable				
	Plate Thickness	Total Height		
910-225	2	25	294/-	20
910-250	2	50	510/-	20
910-275	2	75	756/-	20
910-2100	2	100	966/-	20
910-2125	2	125	1557/-	10
910-2150	2	150	1710/-	10
910-425	4	25	447/-	10
910-450	4	50	669/-	10
910-475	4	75	921/-	10
910-4100	4	100	1596/-	10
910-4125	4	125	1764/-	10
910-4150	4	150	2061/-	10
910-4200	4	200	2709/-	10



		To Suit T-Slot	Price Each Rs.	Std. Pkg.
APEX CODE 911 Screw Jack with Steel Body (Having Flat Support)				
	Range KN			
911-1	40-50	12	819/-	10
911-2	50-70	60	996/-	10
911-3	70-100	60	1467/-	10
911-4	100-140	100	2094/-	4
911-5	140-210	165	4212/-	2
911-6	190-300	350	6744/-	2



		To Suit T-Slot	Price Each Rs.	Std. Pkg.
APEX CODE DS 911 Screw Jack with double Side Flange				
DS 911-1	200-320	40	3327/-	2
DS 911-2	320-550	25	4338/-	2



		To Suit T-Slot	Price Each Rs.	Std. Pkg.
APEX CODE P 911 Pads for Screw Jacks				
P 911-1			186/-	10
P 911-2			186/-	10
P 911-3			252/-	10
P 911-4			258/-	10
P 911-6			285/-	10
P 911-7			372/-	10
P 911-8/14			372/-	10
P 911-9/26			567/-	10

Size in mm	Price Each Rs.	Std. Pkg.
------------	----------------	-----------



APEX CODE SF 911
Screw Jack with Single Side Flange (with Ring Type Lock Nut) (S.G. Iron Housing Carbon Steel Spindle)

SF 911-1	100-140	60	2025/-	4
SF 911-2	140-200	60	2553/-	2

To Suit T-Slot	Price Each Rs.	Std. Pkg.
----------------	----------------	-----------



APEX CODE 913P
Self Aligning Pad (with Plain Ball)

913P-1	8	8	435/-	10
913P-2	10	10	630/-	10
913P-3	12	12	804/-	10
913P-4	16	16	1095/-	10
913P-5	20	20	2598/-	5



APEX CODE HD 911
Heavy Duty Screw Jack (With Brass Locking Screw)

HD 911-1	200-300	80	6954/-	2
HD 911-2	280-460	60	9528/-	2
HD 911-3	430-750	50	12198/-	1
HD 911-4	320-450	80	13701/-	1
HD 911-5	410-720	60	14937/-	1



APEX CODE 914T
Strap Clamp (As Per IS 4294:1984) (Adjustable Clamp with Thread for Adjusting Screw) (Only Clamp Price) (In Accordance with the DIN 6314)

914T-1	9x60	M8	162/-	10
914T-2	11x80	M10	297/-	10
914T-3	14x100	M12	417/-	10
914T-4	14x125	M12	504/-	10
914T-5	18x125	M16	573/-	10
914T-6	18x160	M16	654/-	10
914T-7	22x160	M20	1086/-	4
914T-8	22x200	M20	1206/-	4
914T-11	26x200	M24	1728/-	4
914T-12	26x250	M24	2079/-	4



APEX CODE 912
Steel Parallels (As per IS 4241 : 1990) (PAIR)

912-1	5x10x100	1224/-	3
912-2	10x20x125	1719/-	3
912-3	15x30x150	2625/-	3
912-4	20x40x200	4554/-	3
912-5	25x50x250	8427/-	2
912-6	30x60x300	14664/-	1
912-7	40x80x350	28839/-	1
912-8	50x100x400	51882/-	1



APEX CODE 915
Stepped Strap Clamp

915-1	11x80	M10	333/-	10
915-2	14x100	M12	444/-	10
915-3	14x125	M12	534/-	10
915-4	18x125	M16	606/-	10
915-5	18x160	M16	696/-	10
915-6	22x160	M20	1128/-	4
915-7	22x200	M20	1248/-	4
915-8	26x200	M24	1779/-	4



APEX CODE 913
Self Aligning Pad (with Ribbed Ball)

913-1	8	8	624/-	10
913-2	10	10	783/-	10
913-3	12	12	840/-	10
913-4	16	16	1125/-	10
913-5	20	20	2808/-	5



APEX CODE 916
Open-End Strap Clamp (As per Is 4293-1984) (In accordance with the DIN 6315-B Standard)

916-1	11x100	M10	354/-	10
916-2	14x125	M12	456/-	10
916-3	14x160	M12	543/-	10
916-4	14x200	M12	654/-	10
916-5	18x160	M16	780/-	10
916-6	18x200	M16	924/-	10
916-7	18x250	M16	1206/-	10
916-8	22x200	M20	1821/-	4
916-9	22x250	M20	2166/-	4
916-10	22x315	M20	2793/-	4
916-11	26x200	M24	1860/-	4
916-12	26x250	M24	2223/-	4
916-13	26x315	M24	2814/-	4

Size in mm	Price Each Rs.	Std. Pkg.
------------	----------------	-----------



APEX CODE 917
Goose Neck Clamp

917-1	11x100	M10	606/-	10
917-2	14x125	M12	636/-	10
917-3	18x160	M16	1104/-	10
917-4	22x200	M20	2016/-	4
917-5	26x250	M24	3774/-	4



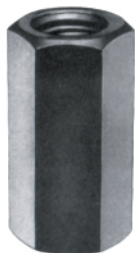
APEX CODE 920
Hex Nut

920-1	M8	19/-	50
920-2	M10	22/-	50
920-3	M12	30/-	50
920-3A	M14	48/-	50
920-4	M16	48/-	50
920-5	M20	84/-	30
920-6	M24	132/-	20
920-7	M30	249/-	10



APEX CODE 921
Flanged Nut (As Per IS : 7795-1975)

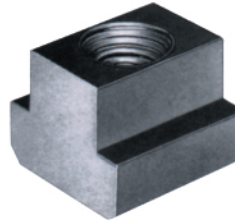
921-1	M8	30/-	50
921-2	M10	42/-	50
921-3	M12	54/-	50
921-3A	M14	72/-	50
921-4	M16	87/-	50
921-5	M20	135/-	30
921-6	M24	162/-	30
921-7	M30	349/-	30



APEX CODE 922
Coupling Nut

922-1	M10	33/-	50
922-2	M12	45/-	50
922-2A	M14	90/-	50
922-3	M16	90/-	50
922-4	M20	159/-	50
922-5	M24	267/-	30
922-6	M30	519/-	10

To Suit T-Slot	Price Each Rs.	Std. Pkg.
----------------	----------------	-----------



APEX CODE 923
T-Slot Nut (As Per IS 2015-1977)
(In accordance with DIN 508 Standard)

923-0	8xM6	30/-	50
923-1	10xM8	42/-	50
923-2	12xM10	48/-	50
923-2A	14xM10	60/-	50
923-3	14xM12	60/-	50
923-3A	16xM12	87/-	50
923-3B	18xM12	96/-	50
923-4	18xM14	96/-	50
923-5	18xM16	96/-	50
923-5A	20xM16	114/-	50
923-5B	22xM16	165/-	30
923-7	22xM20	165/-	20
923-7A	28xM20	288/-	10
923-9	28xM24	288/-	10



APEX CODE 925
Plain Washer
(In accordance with DIN 6340 Standard)

925-1	M8	24/-	50
925-2	M10	27/-	50
925-3	M12	45/-	50
925-3A	M14	63/-	50
925-4	M16	63/-	50
925-5	M20	78/-	50
925-6	M24	114/-	30
925-7	M30	213/-	20



APEX CODE 926
Spherical Washer with Conical Seat
(In accordance with DIN 6319 Type C DIN 6319 Type D Standard)

926-1	M8	36/-	50
926-2	M10	42/-	50
926-3	M12	57/-	50
926-4	M16	81/-	50
926-5	M20	126/-	30
926-6	M24	186/-	30
926-7	M30	324/-	10



APEX CODE 928
C-Washer (As Per IS : 4291-1996)
(In accordance with DIN 6372)

928-1	M8	54/-	50
928-2	M10	66/-	50
928-3	M12	90/-	50
928-4	M16	150/-	50
928-5	M20	219/-	30
928-6	M24	312/-	30
928-7	M30	474/-	10

Size in mm	Price Each Rs.	Std. Pkg.
---------------	-------------------	--------------

APEX CODE 929
T-Bolts (As Per IS 2014:1977)

929-5	10MMxM10	40	59/-	30
929-5A		50	60/-	30
929-6		65	63/-	30
929-7		80	66/-	30
929-8		100	81/-	20
929-9	12MMxM12	50	75/-	50
929-10		65	81/-	50
929-11		80	84/-	50
929-12		100	96/-	50
929-13		125	105/-	50
929-14		160	120/-	50
929-15		200	135/-	30
929-15A		250	165/-	20
929-16	14MMxM12	50	81/-	50
929-17		65	96/-	50
929-18		80	102/-	50
929-19		100	111/-	50
929-20		125	117/-	50
929-21		160	129/-	50
929-22		200	153/-	30
929-23		250	183/-	10
929-23A		320	237/-	10
929-24	16MMxM16	65	114/-	50
929-25		80	123/-	50
929-26		100	135/-	50
929-27		125	153/-	50
929-28		160	162/-	30
929-29		200	213/-	30
929-30		250	279/-	10
929-30A		320	297/-	30
929-31	18MMxM16	65	123/-	50
929-32		80	141/-	50
929-33		100	150/-	50
929-34		125	156/-	50
929-35		160	168/-	20
929-36		200	213/-	20
929-37		250	279/-	10
929-37A		320	336/-	20
929-38	20MMxM20	80	165/-	20
929-39		100	180/-	20
929-40		125	225/-	20
929-41		160	246/-	10
929-42		200	258/-	10
929-43		250	336/-	10
929-43A		320	420/-	10
929-44	22MMxM20	80	216/-	20
929-45		100	231/-	20
929-46		125	249/-	20
929-47		160	297/-	10
929-48		200	312/-	6
929-49		250	369/-	6
929-50		320	477/-	6
929-51	24MMxM24	100	339/-	6
929-52		125	366/-	6
929-53		160	378/-	6
929-54		200	426/-	6
929-55		250	540/-	6
929-56		320	546/-	6
929-57		400	651/-	6
929-58	24MMxM28	100	384/-	6
929-59		125	429/-	6
929-60		160	525/-	6
929-61		200	648/-	6
929-62		250	855/-	6
929-63		320	888/-	6
929-64		400	1044/-	6



To Suit T-Slot	Price Each Rs.	Std. Pkg.
-------------------	-------------------	--------------

APEX CODE 930
Clamping Studs
(As Per IS 13178:1991)

930-0	M8	32	21/-	20
930-1		40	24/-	20
930-2		50	27/-	20
930-3		63	30/-	20
930-4		80	33/-	20
930-5		100	36/-	20
930-6	M10	50	27/-	20
930-7		63	30/-	20
930-8		80	33/-	30
930-9		100	36/-	30
930-10		125	48/-	20
930-10A		160	60/-	20
930-10B		200	75/-	10
930-11	M12	50	30/-	50
930-12		63	33/-	30
930-13		80	36/-	30
930-14		100	45/-	30
930-15		125	60/-	30
930-16		160	75/-	30
930-17		200	96/-	30
930-17A		250	105/-	20
930-17B		315	168/-	10
930-17C	M14	63	45/-	30
930-17D		80	52/-	30
930-17E		100	79/-	30
930-17F		125	92/-	30
930-17G		160	112/-	30
930-17H		200	150/-	30
930-17I		250	185/-	20
930-17J		315	229/-	10
930-18	M16	63	45/-	30
930-19		80	54/-	30
930-20		100	81/-	30
930-21		125	93/-	30
930-22		160	114/-	30
930-23		200	153/-	30
930-24		250	189/-	20
930-24A		315	231/-	10
930-25	M20	80	84/-	10
930-26		100	138/-	10
930-27		125	183/-	10
930-28		160	198/-	10
930-29		200	219/-	10
930-30		250	279/-	10
930-31		315	339/-	10
930-32		400	405/-	10
930-32A		450	441/-	10
930-33		500	525/-	10
930-34	M24	100	135/-	10
930-35		125	183/-	10
930-36		160	213/-	10
930-37		200	276/-	10
930-38		250	333/-	10
930-39		315	450/-	10
930-40		400	543/-	10
930-40A		450	630/-	10
930-41		500	684/-	10



APEX CODE 930S
Clamping Stud with Slot
Having Tapped Holes.
(Hardened & Tempered)

930S-1	M12	100	75/-	20
930S-2		125	90/-	20
930S-3		150	96/-	20
930S-4		175	105/-	20
930S-5	M16	125	120/-	20
930S-6		150	135/-	20
930S-7		175	162/-	20
930S-8		200	171/-	20
930S-8A	M20	125	162/-	10
930S-9		150	183/-	10
930S-10		175	213/-	10
930S-11		200	231/-	10
930S-11A	M24	150	234/-	10
930S-12		175	279/-	10
930S-13		200	312/-	10
930S-14		225	333/-	10





Size in mm	Price Each Rs.	Std. Pkg.
------------	----------------	-----------

APEX CODE 931
Clamping Kit - 34 Pcs.
 (With Adjustable Plates & Strap Clamps) in Elegant Metallic Steel Box

931-1	14-12 M	5892/-	2
931-2	16-12 M	5955/-	2
931-3	18-12 M	6021/-	2
931-4	18-16 M	7356/-	2



APEX CODE 932
Clamping Kit - 58 Pcs.
 (With Step Blocks & Stepped Strap Clamps) in Elegant Metallic Steel Rack

932-1	14-12 M	9876/-	2
932-2	16-12 M	9969/-	2
932-3	18-12 M	10086/-	2
932-4	18-16 M	13578/-	2



APEX CODE 933
Universal Strap Clamp
 (with T-Bolt & Special Nut)

933-1	1212x100	792/-	10
933-2	1412x100	801/-	10
933-3	1616x100	1053/-	10
933-4	1816x100	1059/-	10
933-5	2020x160	1554/-	4
933-6	2220x160	1572/-	4
933-7	2424x250	2271/-	4
933-8	2824x250	2292/-	4



APEX CODE 934
Mould Clamp
 (with Stud & Flange Nut)

934-1	12x100	789/-	10
934-2	16x125	1065/-	10
934-3	20x175	1575/-	4
934-4	24x200	2199/-	4
with T-bolt & Flanged Nut			
934-5	1212x100	831/-	10
934-6	1412x100	837/-	10
934-7	1616x160	1116/-	10
934-8	1816x160	1116/-	10
934-9	2020x160	1677/-	4
934-10	2220x160	1695/-	4
934-11	2424x250	2622/-	4
934-12	2824x250	2622/-	4



APEX CODE 935
Open End Mould Clamp
 (Clamp Price only)

935-1	M-12	624/-	10
935-2	M-16	927/-	10
935-3	M-20	1758/-	4
935-4	M-24	2187/-	4

APEX CODE 935 B
Bolt only for above

935B-1	M-12	96/-	10
935B-2	M-16	138/-	10
935B-3	M-20	231/-	10
935B-4	M-24	303/-	10



APEX CODE 936
Slotted Clamp (As Per IS:6082-1985)

D x L	Suitable for Screw Sizes			
	D	L		
936-1	11x75	M10	294/-	10
936-2	11x95	M10	315/-	10
936-3	14x100	M12	417/-	10
936-4	14x115	M12	462/-	10
936-5	18x120	M16	528/-	10
936-6	18x135	M16	561/-	10
936-7	22x140	M20	927/-	4
936-8	22x150	M20	966/-	4
936-9	26x200	M24	1554/-	4
936-10	26x240	M24	1812/-	4



APEX CODE 937
Double Ended Clamp
 (As per IS:6080-1985)

937-1	11x60	M10	189/-	10
937-2	11x85	M10	231/-	10
937-3	14x100	M12	321/-	10
937-4	14x125	M12	384/-	10
937-5	18x125	M16	426/-	10
937-6	18x150	M16	492/-	10
937-7	22x150	M20	789/-	4
937-8	22x200	M20	987/-	4



APEX CODE 938
Plain Clamp
 (As Per IS:6081-1971)

938-1	11x70	M10	252/-
938-2	14x80	M12	270/-
938-3	18x100	M16	390/-
938-4	22x120	M20	654/-
938-5	26x150	M24	999/-



APEX CODE 939
Table Clamp
 (As Per IS:5251-1984)

939-1	11x23	M10	198/-
939-2	11x30	M10	228/-
939-3	14x26	M12	270/-
939-4	14x33	M12	327/-
939-5	18x35	M16	450/-
939-6	18x40	M16	459/-
939-7	22x40	M20	588/-
939-8	22x45	M20	726/-



APEX CODE 501
Bearing Puller 3 Legs Universal
Drop Forged Steel

75	333/-	10
100	444/-	10
150	654/-	10
200	882/-	10
250	1284/-	6
300	1536/-	6



APEX CODE 501A
Bearing Puller 2 Legs Universal
Drop Forged Steel

75	327/-	10
100	432/-	10
150	636/-	10
200	861/-	10
250	1263/-	6
300	1518/-	6



Size in mm	Price Each Rs.	Std. Pkg.
APEX CODE 501 PC Bearing Puller D/F 3 Legs (Double Hole Powder Coated)		
75	357/-	20
100	477/-	20
150	708/-	20
200	945/-	10



Size	Price Each Rs.	Std. Pkg.
APEX CODE 501 H Bearing Puller Hand Forged Steel 3 Legs		
14"	1860/-	6
16"	2130/-	6
18"	2391/-	6
20"	2949/-	6
22"	3237/-	4
24"	3531/-	4



Size	Price Each Rs.	Std. Pkg.
APEX CODE 501 AH Bearing Puller Hand Forged Steel 2 Legs		
14"	1821/-	6
16"	2079/-	6
18"	2334/-	6
20"	2880/-	6
22"	3168/-	4
24"	3456/-	4



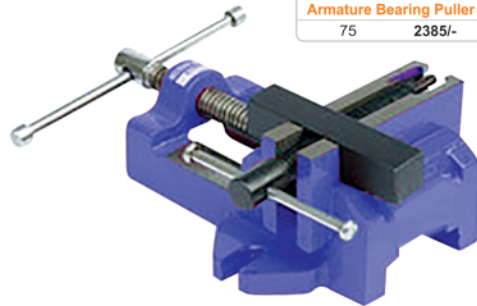
Size	Price Each Rs.	Std. Pkg.
APEX CODE 502 G Clamps Malleable		
50	150/-	60
75	213/-	40
100	279/-	40
125	351/-	20
150	435/-	20
200	585/-	20
250	1047/-	10
300	1257/-	10



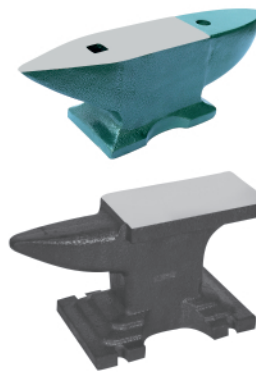
Size	Price Each Rs.	Std. Pkg.
APEX CODE 503 Drop Forged G. Clamps		
50	294/-	50
75	444/-	40
100	612/-	40
150	939/-	40
200	1413/-	10
250	2562/-	6
300	3162/-	4



Size	Price Each Rs.	Std. Pkg.
APEX CODE 504 Adj. Tap Wrench (Auto Black Drop Forged Carbon Steel Hardened & Tempered)		
6.5	258/-	50
10	306/-	50
13	333/-	50
20	462/-	20
25	687/-	10
31	756/-	10
40	1371/-	10
50	2373/-	10



Size in mm	Price Each Rs.	Std. Pkg.
APEX CODE 505 Armature Bearing Puller Vice		
75	2385/-	4



Weight	Price Each Rs.
APEX CODE 506 Anvil	
1 kgs	312/-
2 kgs	630/-
5 kgs	1449/-
10 kgs	2904/-
15 kgs	4350/-
20 kgs	5802/-
25 kgs	7257/-
30 kgs	8709/-
40 kgs	10806/-
50 kgs	13398/-
60 kgs	16074/-
70 kgs	18756/-
75 kgs	20091/-
100 kgs	26790/-



M.T. No.	Price Each Rs.	Std. Pkg.
APEX CODE 507 Drill Sleeves (Workshop Grade)		
0-1	102/-	100
2-1	111/-	100
3-2	147/-	50
4-3	270/-	50
5-4	663/-	30
6-5	1914/-	30
3-1	171/-	100
4-1	309/-	100
4-2	309/-	100
5-1	741/-	50
5-2	741/-	50
5-3	741/-	50
6-2	2190/-	30
6-3	2190/-	30
6-4	2190/-	30



Size	Price Each Rs.	Std. Pkg.
APEX CODE 508 Drill Chuck with Key		
1/2"	792/-	30



APEX[®]

SINCE 1959

An ISO 9001-2015 Company

Terms & Conditions

- All prices are exclusive GST. GST will be charged extra.
 - Prices are F.O.R. Jalandhar.
 - Order will be accepted for supply in standard carton packaging as mentioned in list.
 - Subject to Jalandhar Jurisdiction only.
-

APEX INDUSTRIES
JALANDHAR 144 008 (INDIA)

E-mail : apex1959@gmail.com

info@apexmachinevices.com

visit us at : www.apexmachinevices.com

Follow us  @apexvices



Authorised Dealer