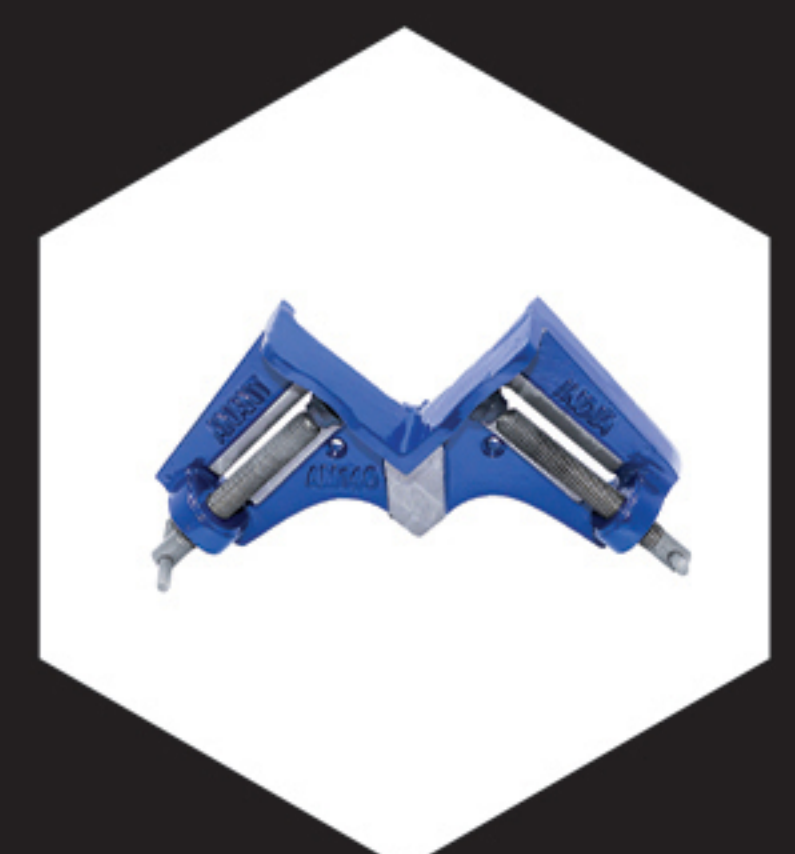
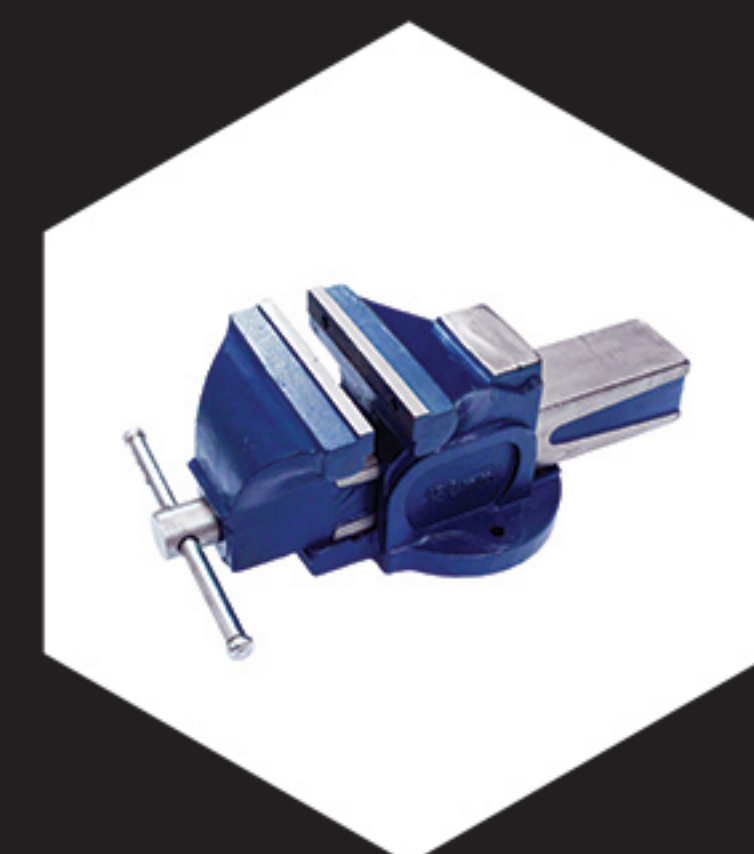


SECTION B



2026



ANANT TOOLS (UNIT NO-II) PVT. LTD.

Quality is Our Priority Since 1949

High Precision Special Chrome Vanadium Alloy Steel

Description:

ANANT CARPENTER CHISELS AND MORTISE are forged from Chrome Vanadium Alloy Steel and heat treated under the strict supervision of qualified heat treatment experts ensuring their best performance. They are precision ground and well protected against oxidation and can be resharpened along its length. The chisels and the mortise blades are supplied fitted with shock resistant polypropylene handles. They are light and well balanced and supplied with protecting end cap.

Chisels

| Article No. | Width Of Blades in mm. | Appx. Wt. Gms. | Packing Individual Box | Unit Packing Master Cartons | Price Per Pc. (in Rs.) |
|-------------|------------------------|----------------|------------------------|-----------------------------|------------------------|
| A 221 | 4 | 120 | 4 Pcs. | 96 Pcs. | 228.00 |
| A 222 | 6 | 120 | 4 Pcs. | 96 Pcs. | 228.00 |
| A 223 | 8 | 125 | 4 Pcs. | 96 Pcs. | 205.00 |
| A 224 | 10 | 150 | 4 Pcs. | 96 Pcs. | 205.00 |
| A 225 | 12 | 150 | 4 Pcs. | 96 Pcs. | 205.00 |
| A 226 | 13 | 150 | 4 Pcs. | 96 Pcs. | 224.00 |
| A 227 | 14 | 180 | 4 Pcs. | 96 Pcs. | 224.00 |
| A 228 | 15 | 180 | 4 Pcs. | 96 Pcs. | 224.00 |
| A 229 | 16 | 180 | 4 Pcs. | 96 Pcs. | 239.00 |
| A 230 | 18 | 190 | 4 Pcs. | 96 Pcs. | 239.00 |
| A 231 | 19 | 190 | 4 Pcs. | 96 Pcs. | 259.00 |
| A 232 | 20 | 190 | 4 Pcs. | 96 Pcs. | 259.00 |
| A 233 | 22 | 210 | 4 Pcs. | 96 Pcs. | 259.00 |
| A 234 | 24 | 210 | 4 Pcs. | 96 Pcs. | 264.00 |
| A 235 | 25 | 220 | 4 Pcs. | 96 Pcs. | 264.00 |
| A 236 | 26 | 220 | 4 Pcs. | 96 Pcs. | 264.00 |
| A 237 | 28 | 235 | 4 Pcs. | 72 Pcs. | 283.00 |
| A 238 | 30 | 235 | 4 Pcs. | 72 Pcs. | 305.00 |
| A 239 | 32 | 240 | 4 Pcs. | 72 Pcs. | 305.00 |
| A 240 | 36 | 275 | 4 Pcs. | 72 Pcs. | 323.00 |
| A 241 | 38 | 275 | 4 Pcs. | 72 Pcs. | 323.00 |
| A 242 | 45 | - | | 72 Pcs. | 356.00 |
| A 243 | 50 | - | | 60 Pcs. | 400.00 |



Mortise

| | | | | | |
|-------|----|-----|--------|---------|--------|
| A 261 | 8 | 195 | 2 Pcs. | 96 Pcs. | 317.00 |
| A 262 | 10 | 240 | 2 Pcs. | 96 Pcs. | 317.00 |
| A 263 | 12 | 280 | 2 Pcs. | 72 Pcs. | 343.00 |
| A 264 | 16 | - | - | 60 Pcs. | 394.00 |

Gouges High Precision Special Chrome Vanadium Alloy Steel

Description:

ANANT gouges are forged from special chrome vanadium alloy steel and heat treated under the strict supervision of qualified heat treatment experts ensuring their best performance.

These are similar to chisels but with a curvature on the blade - they are the most frequently used carving tools. Used for grooving, or when turned over, for carving convex shapes. They are available in various sizes and sweeps.

The size of the sweep selected will vary with the amount of work the tool is required to use. Higher the number of the gouge, the greater the blade sweep or curvature. These are half rounded, finely polished inner surface, fitted with shock resistant polypropylene handles or seasoned hard wood handles. Blades are end protected with plastic caps. A top quality product for professional use.

Materials

- Blades : High precision chrome vanadium alloy steel
- Handles : Shock resistant polypropylene plastic handle. Seasoned hard wood handles protected with plated steel shims.

Finish

- Blades : Finely ground and lacquered polished, end protected with plastic caps
- Handles : Top quality plastic handles as die finish. Lacquered polished wooden handle.

Packing

- Individually packed in a blister or carbon box



| Article No. | Width Of Blades in Mm. | Appx. Wt. Gms. | Unit Packing | Price per Pc. (in rs.) |
|-------------|------------------------|----------------|--------------|------------------------|
| A 271 | 8 | 120 | 96 Pcs. | 239.00 |
| A 272 | 10 | 125 | 96 Pcs. | 215.00 |
| A 273 | 12 | 140 | 96 Pcs. | 215.00 |
| A 274 | 16 | 150 | 96 Pcs. | 252.00 |
| A 275 | 20 | 160 | 96 Pcs. | 265.00 |
| A 276 | 25 | 170 | 96 Pcs. | 278.00 |
| A 277 | 18 | 180 | 96 PCS | - |
| A 278 | 19 | 185 | 96 PCS | - |
| A 279 | 20 | 190 | 96 PCS | - |
| A 280 | 22 | 200 | 96 PCS | - |
| A 281 | 25 | 215 | 96 PCS | - |
| A 282 | 28 | 230 | - | - |
| A 283 | 30 | 250 | - | - |
| A 284 | 32 | 270 | - | - |

Wood Turning Tools

Description:

ANANT wood turning tools are forged from special chrome vanadium alloy steel and heat treated under the strict supervision of qualified heat treatment experts ensuring their best performance.

ANANT turning tools are of five basic types

NO.1 Diamond point tool (14mm width)

NO.2 Round nose tool (14mm width)

NO.3 Parting tool (14mm width)

NO.4 Skew point tool (14mm width)

NO.5 Gouge point tool (10mm width)

Diamond points are used as scrapper for shaping and finishing. Round nose also used as scappers for shaping and finishing. Skew point used for finishing between centres only. Gouge point tool used mainly for roughing between centre & bowl turning. These tools are used by the home craftsman, industrial professionals and the engineers. Tools are supplied with lacquered polished finish & fitted with ergonomically designed seasoned hard wood handles duly lacquer polished



Materials

- Blades : High precision chrome vanadium alloy steel
- Handles : Seasoned hard wood, front and covered by steel shum electro plated.

Finish

- Blades : Precision blade lacquer polished.
- Handles : Lacquer polished seasoned hard wood.

Packing

- Supplied 5pcs set in a display box

| Article No. | Packing | Unit Packing | Price Per Set (in Rs.) |
|-------------|---------------|--------------|------------------------|
| A 550 | Set of 5 pcs. | 12 set | 1643.00 |



Wood Carving Tools

Description:

ANANT carving tools are forged from special chrome vanadium alloy steel and heat treated under the strict supervision of qualified heat treatment experts ensuring their best performance.

These tools are used by the home craftsman, industrial professionals and the engineers. Tools are supplied with lacquered polished finish & fitted with ergonomically designed seasoned hard wood handles duly lacquer polished.

Materials

- Blades : High precision chrome vanadium alloy steel
- Handles : Seasoned hard wood, front and covered

Finish

- Blades : Precision blade lacquer polished.
- Handles : Lacquer polished seasoned hard wood.

Packaging

- Supplied 6pcs set in a display

| Article No. | Packing | Price Per Set (in Rs.) |
|-------------|----------|------------------------|
| A 555 | Set of 6 | 1723.00 |

Bevelled Edge Chisels Set

| Article No. | Packing | Price Per Set (in Rs.) |
|--------------------------|---------------|------------------------|
| (12, 18, 26, 32 & 38 mm) | Set of 5 pcs. | 1338.00 |

Craftsman Hammer with Polished Wooden Handle

Description:

ANANT Craftsman hammer has been ergonomically designed. The right handle size is made for a better grip and increased fitting power, which means you can work longer without getting tired. This in turn reduces the strain on body. The head of claw hammer is scientifically heat treated with curved claw and fitted with seasoned hard



Materials

- The head is forged from high grade carbon steel and handle from seasoned hard wood.

Finish

- The head is powder coated and lacquer polished. Wooden handle is lacquer polished.

Packing

- Two pieces in a carton.

Hammer with polished wooden handle

| Article No. | Weight in Gms. | Weight with handle in Gms. | Packing Individual Box | Unit Packing Master Cartons | Gross Wt. In Kgs. | Price per Pc. (in Rs.) |
|-------------|----------------|----------------------------|------------------------|-----------------------------|-------------------|------------------------|
| A 401 | 100 | 160 | 2 Pcs. | 120Pcs. | 23 | 177.00 |
| A 403 | 200 | 290 | 2 Pcs. | 64 Pcs. | 22 | 209.00 |
| A 405 | 300 | 400 | 2 Pcs. | 48 Pcs. | 22 | 259.00 |
| A 407 | 400 | 530 | 2 Pcs. | 32 Pcs. | 20 | 276.00 |
| A 409 | 500 | 635 | 2 Pcs. | 24 Pcs. | 18 | 305.00 |

Hammer without wooden handle

| Article No. | Weight in Gms. | Packing Individual Box | Unit Packing Master Cartons | Gross Wt. In Kgs. | Price per Pc. (in Rs.) |
|-------------|----------------|------------------------|-----------------------------|-------------------|------------------------|
| A 401 | 100 | 16 Pcs. | 192 Pcs. | 22 | 128.00 |
| A 403 | 200 | 8 Pcs. | 96 Pcs. | 22 | 151.00 |
| A 405 | 300 | 6 Pcs. | 72 Pcs. | 25 | 200.00 |
| A 407 | 400 | 4 Pcs. | 48 Pcs. | 22 | 218.00 |
| A 409 | 500 | 3 Pcs. | 36 Pcs. | 21 | 235.00 |

Claw Hammer Drop Forged Carbon Steel

Description:

ANANT Claw hammer has been ergonomically designed. The right handle size is made for a better grip and increased hitting power, which means you can work longer without getting tired. This in turn reduces the strain on body. The head of claw hammer is scientifically heat treated with curved claw and fitted with tubular steel shaft with soft cushioned grip in colours.



Materials

- The head is forged from high grade carbon steel. The grip is made from cushioned soft PVC. The tubular shaft is made of strong steel.

Finish

- The head is powder coated and lacquer polished. Steel shaft is chromed plated.

Packing

- Two pcs. in a carton.

| Article No. | App. wt. of head in Oz | App. wt. of head in gms | App. total wt. in gms | Unit Packing in Pcs. | Price per Pc. (in Rs.) |
|-------------|------------------------|-------------------------|-----------------------|----------------------|------------------------|
| A 421 | 8 | 230 | 425 | 48 | 233.00 |
| A 424 | 12 | 340 | 560 | 36 | 281.00 |
| A 422 | 16 | 455 | 750 | 24 | 325.00 |
| A 423 | 20 | 570 | 850 | 24 | 477.00 |

Claw Hammer with Polished Wooden Handle



Description:

ANANT Claw hammer has been ergonomically designed. The right handle size is made for a better grip and increased hitting power, which means you can work longer without getting tired. This in turn reduces the strain on body. The head of claw hammer is scientifically heat treated with curved claw and fitted with seasoned hard wood lacquer polished handle.

Materials

- The head is forged from high grade carbon steel and handle from seasoned hard wood.

Finish

- The head is powder coated and lacquer polished. Wooden handle is lacquer

Packing

- Two pcs. in a carton.

| Article No. | App. wt. of head in Oz | App. wt. of head in gms | App. total wt. in gms | Unit Packing in Pcs | Price per Pc. (in Rs.) |
|-------------|------------------------|-------------------------|-----------------------|---------------------|------------------------|
| A 411 | 8 | 225 | 360 | 36 | 215.00 |
| A 412 | 16 | 455 | 650 | 24 | 260.00 |
| A 413 | 20 | 570 | 750 | 24 | 294.00 |
| A 415 | | | | 36 | 369.00 |

Ball Pein Hammers

Description:

ANANT Ball-pein hammers has been ergonomically designed. The right handle size is made for a better grip and increased fitting power, which means you can work longer without getting tired. The head of ball-pein hammer is scientifically heat treated and fitted with best quality wooden handle with lacquer polish.

Materials

- The head is forged from high grade carbon steel. The handle is of strong seasoned hard wood.

Finish

- The head is powder coated and lacquer polished and the handle is polished and lacquer coated.

Packing

- Two pcs. in a carton.



| Article No. | App. wt. of head in Oz | App. wt. of head in gms | App. total wt. in gms | Packing | Price per Pc. (in Rs.) |
|-------------|------------------------|-------------------------|-----------------------|---------|------------------------|
| A 427 B | 4 | 100 | 200 | 72 | 117.00 |
| A 428 B | 8 | 200 | 340 | 60 | 158.00 |
| A 429 B | 12 | 300 | 475 | 36 | 189.00 |
| A 430 B | 16 | 500 | 700 | 36 | 239.00 |
| A 431 B | 20 | 600 | 800 | 24 | 281.00 |
| A 432 B | 28 | 800 | 1000 | 20 | 328.00 |



Cross Pein Hammers

Description:

ANANT Cross-pein hammers has been ergonomically designed. The right handle size is made for a better grip and increased fitting power, which means you can work longer without getting tired. The head of cross-pein hammer is scientifically heat treated and fitted with best quality wooden handle with lacquer polish.

Materials

- The head is forged from high grade carbon steel. The handle is of strong seasoned hard wood.

Finish

- The head is powder coated and lacquer polished and the handle is polished and lacquer coated.

Packing

- Two pcs. in a carton.

| Article No. | App. wt. of head in Oz | App. wt. of head in gms | App. total wt. in gms | Packing | Price per Pc. (in Rs.) |
|-------------|------------------------|-------------------------|-----------------------|---------|------------------------|
| A 427 C | 4 | 100 | 200 | 72 | 117.00 |
| A 428 C | 8 | 200 | 340 | 60 | 158.00 |
| A 429 C | 12 | 300 | 475 | 36 | 190.00 |
| A 430 C | 16 | 500 | 700 | 36 | 239.00 |
| A 431 C | 20 | 600 | 800 | 24 | 281.00 |
| A 432 C | 28 | 800 | 1000 | 20 | 328.00 |

Cross Pein/Warrington Hammer

Description:

ANANT Cross-pein hammers has been ergonomically designed. The right handle size is made for a better grip and increased fitting power, which means you can work longer without getting tired. The head of cross-pein hammer is scientifically heat treated and fitted with best quality fiber handle.

Materials

- The head is forged from high grade carbon steel. The handle is made of fiber.

Finish

- The head is powder coated and lacquer polished.

Packing

- Two pcs. in a carton.



| Article No. | App. wt. of head in Oz | App. wt. of head in gms | App. total wt. in gms | Packing | Price per Pc. (in Rs.) |
|-------------|------------------------|-------------------------|-----------------------|---------|------------------------|
| W 427 C | 4 | 100 | 200 | 72 | 142.00 |
| W 428 C | 8 | 200 | 340 | 60 | 193.00 |
| W 429 C | 12 | 300 | 475 | 36 | 231.00 |
| W 430 C | 16 | 500 | 700 | 36 | 290.00 |
| W 431 C | 20 | 600 | 800 | 24 | 341.00 |
| W 432 C | 28 | 800 | 1000 | 20 | 398.00 |

Wood Working Vices

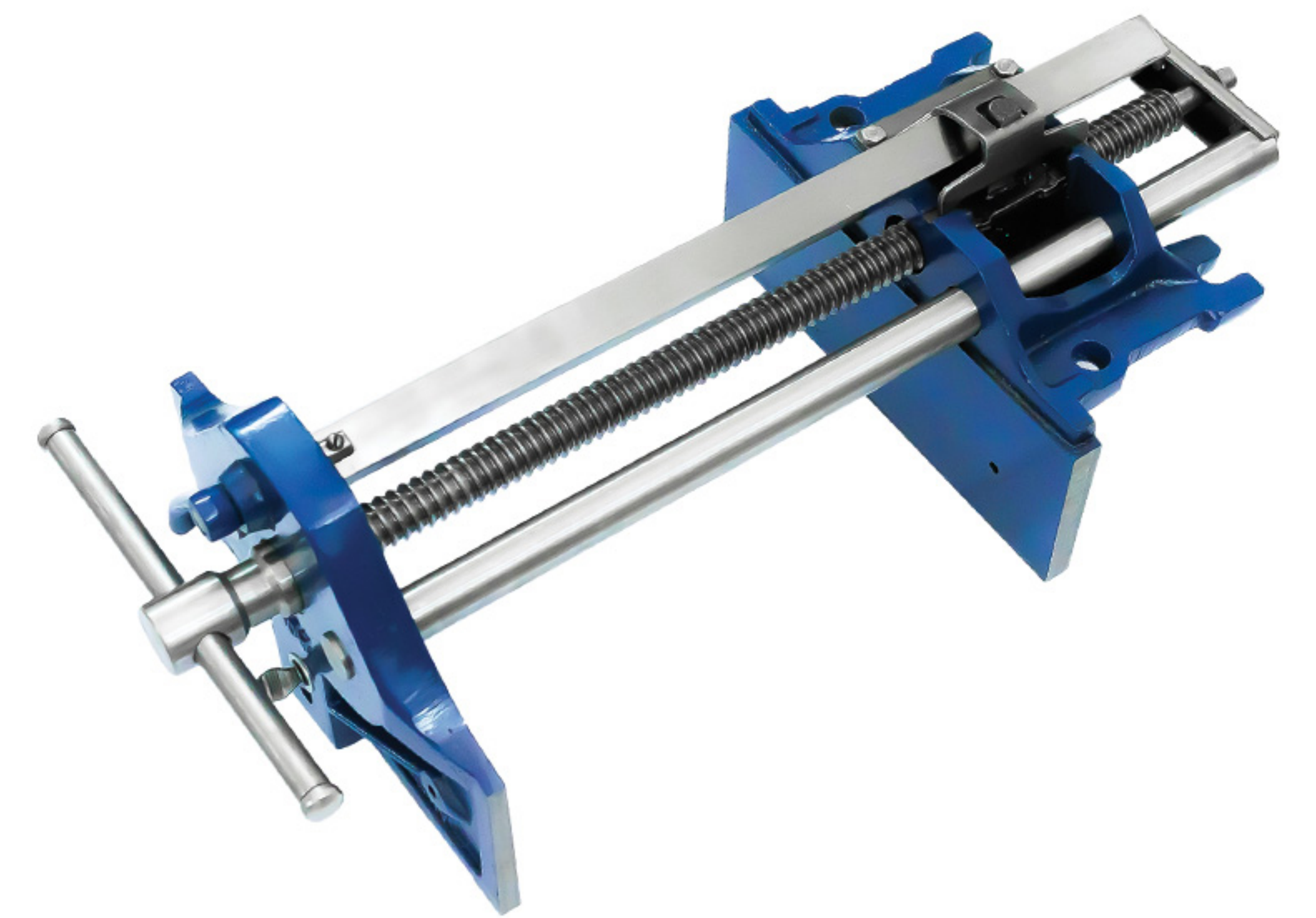
ANANT Woodworker's Vices incorporate modern appearance with well tried features of design which are kept right up to date. They have established a worldwide reputation for reliability of service.

Description:

The standard range of vices is available with Quick-Grip or Plain Screw mechanism. Body and sliding jaw are of robust design and the slide bars work in accurately machine housing, giving a smooth sliding movement and is straight and firm grip. These bars cannot work loose and are positioned to give ample clearance for gripping large work. The body casting has been designed to exclude sawdust and dirt from the working parts. Special attention has been given to the design to ensure ease of fitting to the bench. There are no webs on the body thus eliminating any cutting of the bench and slots are provided instead of rear bolt holes.

Available with easier Quick-grip or Plain Screw mechanism, these vices have all the features of the standard Woodworkers range. The front jaw plate is equipped with an adjustable Dog, a feature which has proved very popular in North America and which, when used in conjunction with a stove fixed on the bench, operates as a most useful and simple clamping device. When a trigger is pressed the jaws will slide freely to or from the work, whilst stay half turn on the handle grips or releases the work instantly. Plain screw action may be used when desired and the vices are also made with Plain Screw action only.

ANANT Woodworker's Vices are guaranteed to meet the most arduous workshop and school conditions and to give long and dependable service.



Materials

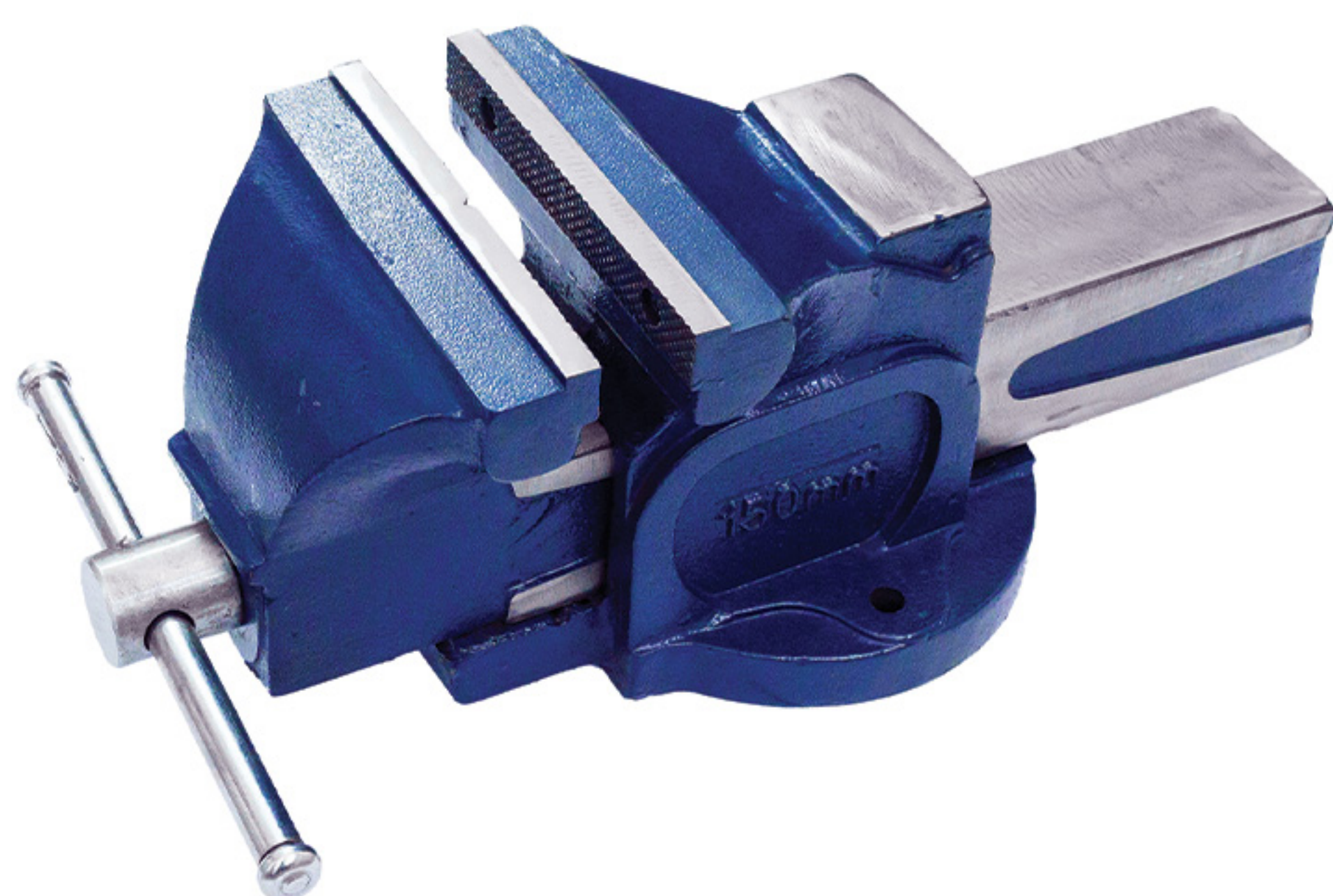
- Body and sliding jaw : SG Iron of guaranteed strength.
- Slide Bars : Solid Steel
- Main Screw : High Quality Steel
- Front Dog : High Quality Steel

Finish

- Stove enamelled ANANT blue.

| Article No. | Particulars | Price per Pc. (in Rs.) |
|-------------|--------------------------|------------------------|
| 52AED | With Quick Release & Dog | 6173.00 |
| 52APD | With Plane Screw & Dog | 5158.00 |
| 52 ½AED | With Quick Release & Dog | 6857.00 |
| 52 ½APD | With Plane Screw & Dog | 5718.00 |
| 53AED | With Quick Release & Dog | 7636.00 |
| 53APD | With Plane Screw & Dog | 6420.00 |

When ordering Plain Screw type, the letter E following the Vice Number should be replaced with the letter P.
Spare Parts are readily available.



Drill Press Vice

| Article No. | Price per Pc. (in Rs.) |
|-------------|------------------------|
| 4" | 2423.00 |
| 5" | 3407.00 |
| 6" | 4839.00 |

Bench Hold Fast

Description:

The ANANT Bench Hold Fast works much like traditional work bench hold downs by clamping work directly to the bench wherever you can drill a 15/16" hole, but it is much more effective than the single piece iron types. Once you have positioned the hold fast over your project, an acme screw forces a pivot arm down with enormous pressure exactly where you need it. The clamp pad also pivot to accomodate odd shaped parts. You will want to use some scrap wood or glue a piece of leather to this pad to keep it from marring your work.

The ANANT Bench Holdfast has several mounting options. If your bench top is at least 2 1/4" thick and made of hardwood, just drill a hole wherever you like. For softwood and thinner tops, and iron flange is included to mount either flush with the top of your bench if it is at least 2" thick or surface mounted to the underside if it's thinner. Of course, you could choose to use the flange on other side of hardwood benches as well. Throat capacity and maximum height are 8".

Materials

- Body: High grade SG Iron.

Finish

- Enamelled ANANT Blue.

Packing

- Individually packed in carton box.



| Article No. | Price Per Pc. (in Rs) |
|-------------|-----------------------|
| AM 146 | 1091.00 |

Mason Cold Chisels

Description:

ANANT cold chisels designed to the shape and size specially for massonary professionals are available in Octagonal, Hexagonal or Rectangular sections. Chisels end is machined to give proper shape and size. Striking end is machined to give proper shape and size. These chisels are heat treated to achieve fine grain structure so as to give maximum strength to the end use of the product. These chisels are supplied without or with cushioned soft plastic grips.

Materials

- Drop forged carbon steel

Packing

- Single pc. in a carton

Finish

- Fully power painted, Blade + striking edge ground. Lacquered polished.

| Article No. | Size in inches | Approx Weight in gms. | Packing in Pcs. | Price per Pc. (in Rs.) |
|-------------|----------------|-----------------------|-----------------|------------------------|
| A 610 | 5/16" X 5" | 50 | 96 | 58.00 |
| A 611 | 7/16" X 6" | 60 | 72 | 66.00 |
| A 612 | 3/8" X 6" | 95 | 72 | 64.00 |
| A 613 | 3/8" X 8" | 125 | 60 | 79.00 |
| A 614 | 1/2" X 6" | 145 | 48 | 102.00 |
| A 615 | 1/2" X 8" | 190 | 48 | 124.00 |
| A 616 | 1/2" X 10" | 240 | 40 | 150.00 |
| A 617 | 1/2" X 12" | 290 | 36 | 164.00 |
| A 618 | 5/8" X 8" | 310 | 36 | 164.00 |
| A 619 | 5/8" X 10" | 390 | 36 | 198.00 |
| A 620 | 5/8" X 12" | 470 | 30 | 238.00 |
| A 621 | 5/8" X 15" | 590 | 24 | 295.00 |
| A 622 | 5/8" X 18" | 700 | 24 | 295.00 |
| A 623 | 3/4" X 10" | 600 | 24 | 295.00 |
| A 624 | 3/4" X 12" | 700 | 24 | 331.00 |
| A 625 | 3/4" X 15" | 900 | 20 | 372.00 |
| A 626 | 3/4" X 18" | 1050 | 18 | 416.00 |
| A 627 | 3/4" X 21" | 1200 | 12 | 483.00 |
| A 628 | 3/4" X 24" | 1400 | 12 | 561.00 |
| A 629 | 1" X 12" | 1120 | 18 | 524.00 |
| A 630 | 1" X 15" | 1200 | 12 | 618.00 |
| A 631 | 1" X 18" | 1500 | 12 | 702.00 |
| A 632 | 1" X 21" | 1800 | 10 | 788.00 |
| A 633 | 1" X 24" | 2100 | 10 | 879.00 |



Chisels Special Size

| Article No. | Length in mm | Cutting edge in mm | Packing in Pcs. | Price per Pc. (in Rs.) |
|-------------|--------------|--------------------|-----------------|------------------------|
| A 661 | 125 | 9 | 48 | 111.00 |
| A 662 | 150 | 16 | 48 | 138.00 |
| A 663 | 200 | 22 | 36 | 199.00 |
| A 664 | 200 | 25 | 36 | 232.00 |
| A 665 | 250 | 30 | 36 | 365.00 |
| A 666 | 300 | 32 | 36 | 417.00 |

Flat Chisels

| Article No. | Length in mm | Cutting edge in mm | Packing in Pcs. | Price per Pc. (in Rs.) |
|-------------|--------------|--------------------|-----------------|------------------------|
| A 667 | 150 | 20 | 48 | 162.00 |
| A 668 | 200 | 25 | 36 | 207.00 |
| A 669 | 235 | 25 | 36 | 208.00 |

Rubber Grip Rs. 27.00 per pc. extra.

Brick Bolster Chiesel

Description:

ANANT cold chisels designed to the shape and size specially for massonary professionals are available in Octagonal, Hexagonal or Rectangular sections. Chisel's end is forged and ground finished to size. Striking end is machined to give proper shape and size. These chisels are heat treated to achieve fine grain structure so as to give maximum strength to the end user of the product. These chisels are supplied without or with cushioned soft plastic grips

Materials

- Drop forged carbon steel

Finish

- Fully power painted, Blade + striking edge ground. Lacquer polished.

Packing

- Two pc. in a carton box.



| Article No. | Sizes in Inches | Approx. Wt. In Gms. | | Packing | Price per Pc. (in rs.) (without Grip) |
|-------------|-----------------|---------------------|-----------|---------|---------------------------------------|
| | | Without Grip | With Grip | | |
| A 651 | 2 ¼" Std | 280 | 350 | 60 | 180.00 |
| A 652 | 3" Std | 700 | 800 | 24 | 307.00 |
| A 653 | 3 ½" Std | 750 | 850 | 24 | 337.00 |
| A 654 | 4" Std | 825 | 925 | 24 | 365.00 |
| A 655 | 4 ½" Std | 900 | 1000 | 20 | 393.00 |
| A 656 | 2 ¼" X 18" | 390 | 440 | 36 | 294.00 |
| A 657 | 3" X 18" | 790 | 900 | 20 | 426.00 |

Strong Bar/ Wrecking Bar/ Gorilla Bar

Description:

ANANT strong bar sometimes called gorilla bar or wrecking bar is designed to the shape and size. Elliptical section is specially selected for the maximum strength of the product. Chisel end and claw end are scientifically heat treated to facilitate the smooth working on the job. Claw is shaped for easy removal of nails from the wood

Shapes available in

- Octagonal section, Hexagonal section, Round section

Materials

- Manufactured from selected carbon steel material.

Finish

- Fully Powder coated, Claw end and chisel ends polished ground and lacquered

Packaging

- Supplied in bulk



| Article No | Sizes in Inches | Approx. Wt. In Gms. | Packing | Price per Pc. (in Rs.) |
|------------|-----------------|---------------------|---------|------------------------|
| A 601 | 12" | 1100 | 20 | 310.00 |
| A 602 | 15" | 1350 | 18 | 365.00 |
| A 603 | 18" | 1575 | 12 | 417.00 |
| A 604 | 24" | 2050 | 12 | 532.00 |
| A 605 | 36" | 2950 | 8 | 755.00 |

Line Pins

Description:

| Art No | Sizes in Inches | Approx. Wt. In Gms. | Packing | Price per Pc. (in rs.) W/o Line Thread |
|--------|-----------------|---------------------|----------|--|
| A 471 | 5/16" X 6 | 140 (2 pcs.) | 100 Sets | 201.00 |



Plugging Chiesel

Description:

ANANT plugging/grooving chisels designed to the shape and size specially for massonary/building professionals are available in Octagonal sections. Chisels are fully forged and ground finished to size. Striking end is machined to give proper shape and size. These chisels are heat treated to acheive fine grain structure so as to give maximum strength to the end use of the

Materials

- Drop forged carbon steel

Finish

- Fully power painted, Blade + striking edge ground. Lacquer polished.

Packaging

- Single pc. in a carton box.

| Art No | Sizes in Inches | Approx. Wt. In Gms. | Packing | Price per Pc. (in Rs.) |
|--------|-----------------|---------------------|---------|------------------------|
| A 641 | 10" X 250 | 200 | 100 | 352.00 |

Brick Trowel

Description:

Wide Pattern trowel are designed for laying bricks for blocks, Rounded heel shapes the blade so that the mortar is carried a little further forward on the blade & wider heel allows for even more mortar to be scooped on the blade. The impact area is made stronger to provide extra endurance, The handle rise is set for correct hang & balance. The blade is hardened & tempered to ensure durability. Wooden handle is attached for comfortable grip



Materials

- Blade: High carbon spring steel.
- Handle is made from selected hard wood & also in plastic.

Finish

- Blade is polished from the bottom & powder coated from top The handle is lacquer polished

Packing

- Two pieces in a carton box.

| Art No | Size | | Price per Pc. (in rs.) |
|--------|--------|-----|------------------------|
| | inches | mm | |
| A 501 | 8 | 200 | 143.00 |
| A 502 | 4 1/2 | 105 | 102.00 |
| A 503 | 6 | 150 | 132.00 |
| A 510 | 11 | 275 | 172.00 |

Plastering Trowel

Description:

ANANT Plastering Trowel is so designed to guarantee to stayflat use after use and can withstand pressure of hard troweling. The flat blade makes applications easier with more consistent finish and the blade is properly shaped and tempered. The special hardwood wooden handle is fitted for comfortable grip.

Materials

- Blade: High carbon spring steel.
- Handle: Plastic with soft rubber grip.

Finish

- Blade is polished from the bottom & powder coated from the top The handle is lacquer polished

Packing

- Two pieces in a carton



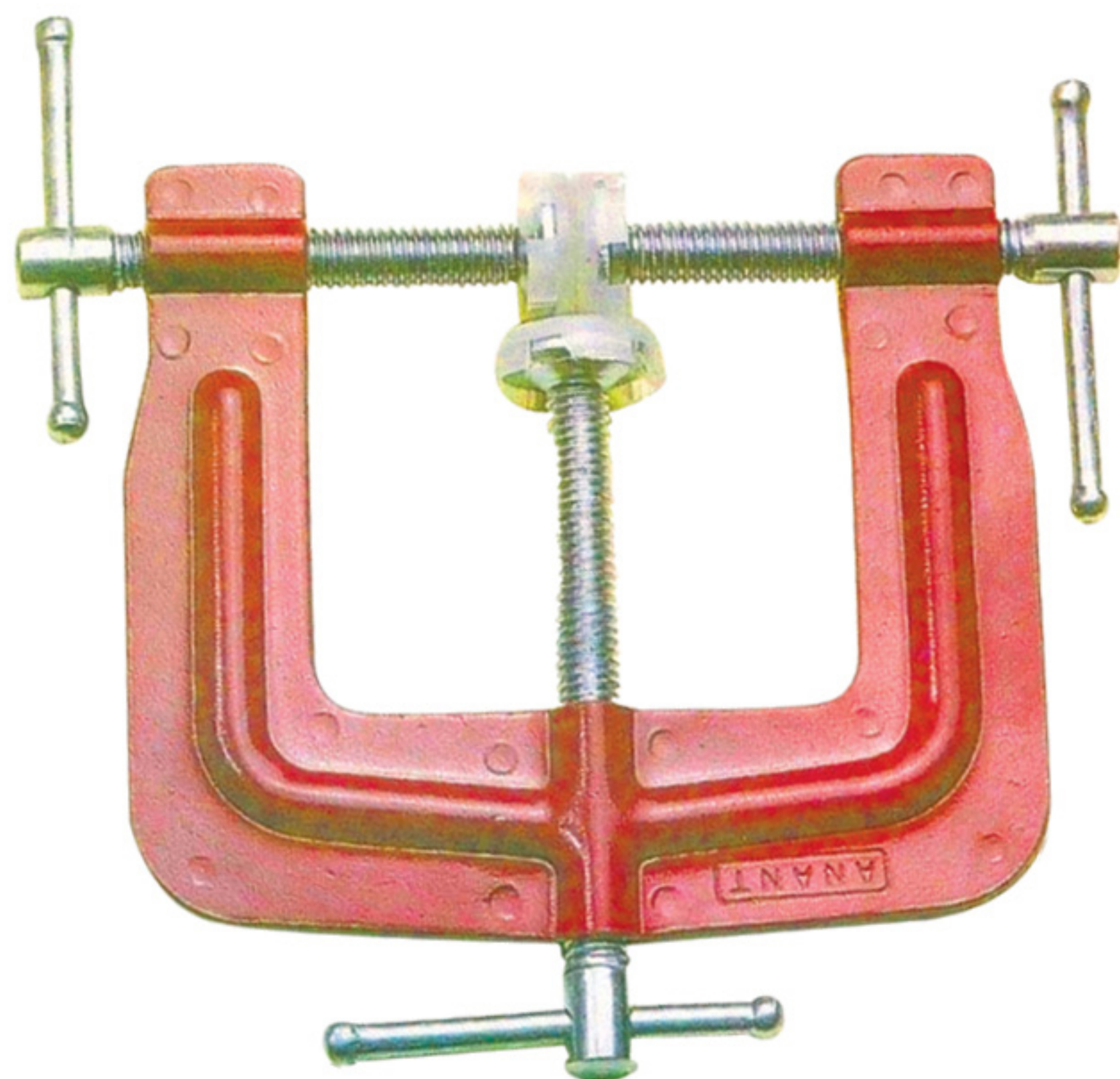
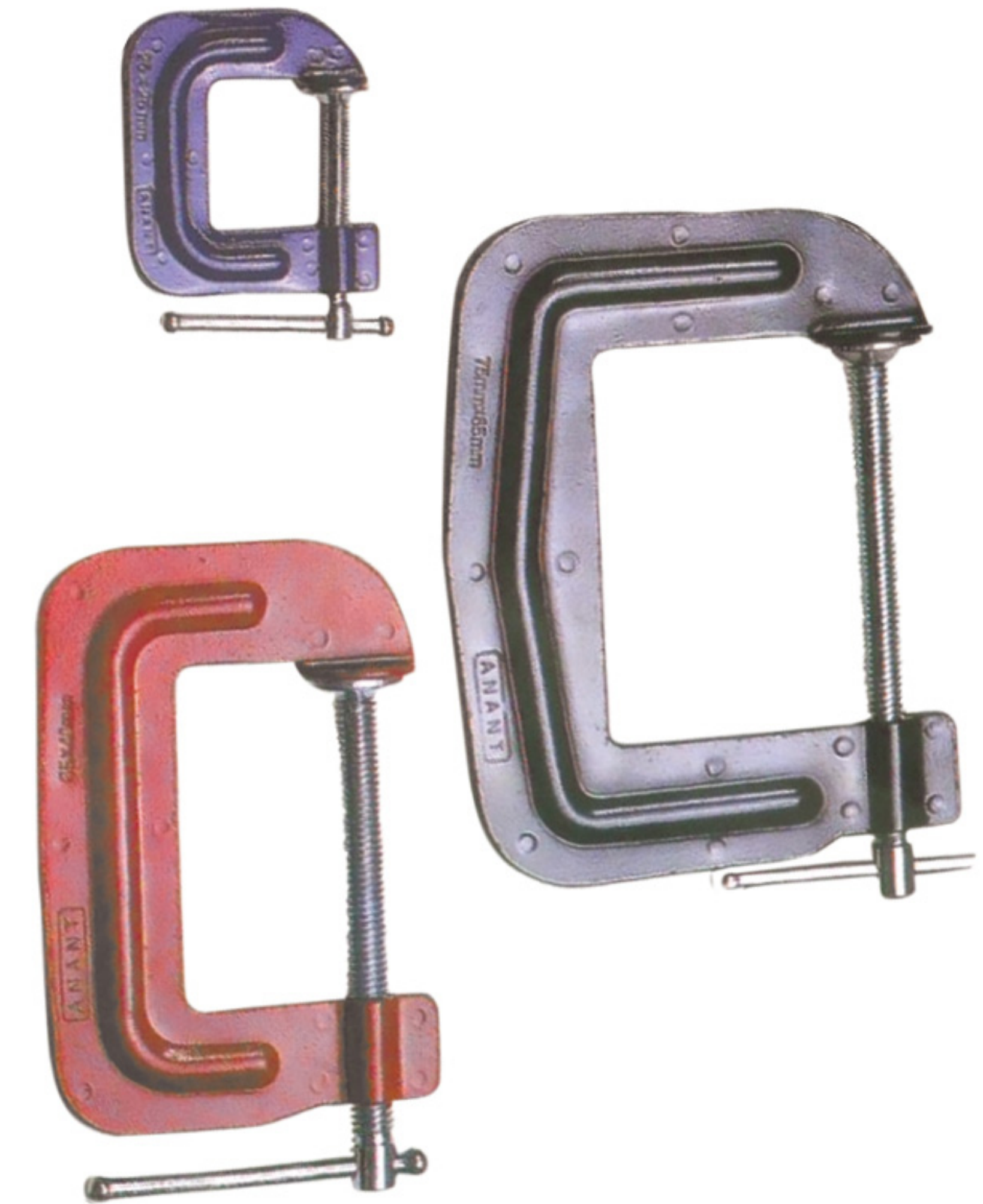
| Article No. | Size | | Price per Pc. (in rs.) |
|-------------|----------|-----------|------------------------|
| | inches | mm | |
| A 451 | 13" X 5" | 330 X 125 | 182.00 |

C Clamps

Description:

This clamp is having Laminated Steel, Ribbed for extra strength and durability, Powder Coated, Screw and Lever Zinc Plated to prevent rust.

| Article No. | Size in Mm | Appx. Wt. Gms. | Packing Individual Box | Unit Packing | Price Per Pc. (in Rs.) |
|-------------|------------|----------------|------------------------|--------------|------------------------|
| A301 | 25 x 25 | 72 | 12 Pcs. | 228 Pcs. | 81.00 |
| A302 | 50 x 25 | 120 | 12 Pcs. | 144 Pcs. | 101.00 |
| A303 | 65 x 40 | 250 | 6 Pcs. | 54 Pcs. | 138.00 |
| A304 | 65 x 65 | 325 | 6 Pcs. | 54 Pcs. | 152.00 |
| A305 | 75 x 40 | 280 | 6 Pcs. | 48 Pcs. | 157.00 |
| A306 | 75 x 65 | 370 | 6 Pcs. | 48 Pcs. | 164.00 |
| A307 | 100 x 50 | 475 | 6 Pcs. | 48 Pcs. | 183.00 |



3-Way Clamps

Description:

Laminated Steel, Ribbed for extra strength and durability, Powder Coated, Screw and Lever Zinc Plated to prevent rust.

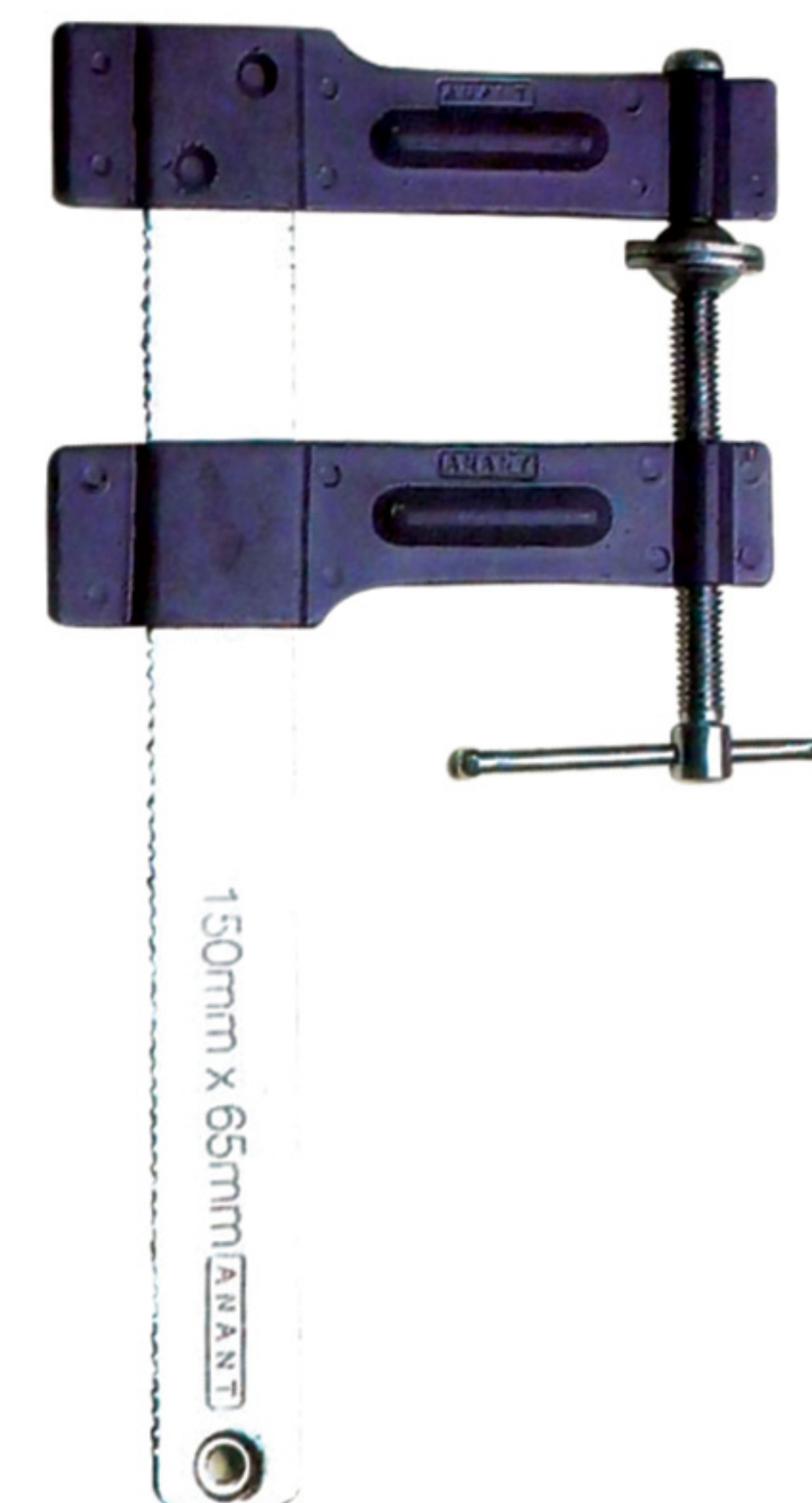
| Article No. | Size in Mm | Appx. Wt. Gms. | Packing Individual Box | Unit Packing | Price Per Pc. (in Rs.) |
|-------------|------------|----------------|------------------------|--------------|------------------------|
| A308 | 65 x 65 | 410 | 6 Pcs. | 48 Pcs. | 215.00 |

F Clamps

Description:

This clamp is having Laminated Steel, Ribbed for extra strength and durability, Powder Coated, Screw and Lever Zinc Plated to prevent rust.

| Article No. | Size Mm | Appx. Wt. Gms. | Packing Individual Box | Unit Packing | Price Per Pc. (in Rs.) |
|-------------|---------|----------------|------------------------|--------------|------------------------|
| A309 | 150X65 | 380 | 4 Pcs. | 36 Pcs. | 227.00 |



AM 140 Corner Clamp 2"

Description:

The open design of the clamp makes it possible to nail and glue joints under cramping pressure. In addition to its function as a mitre framing clamp, it has many general purpose uses and is an ideal tool for pattern makers. The body mounting holes enable the clamp to be screwed to a bench.

Capacity 2 INCH AND 4.1/4 INCH

Materials

- Solid grey iron cast bodies
- Precision machined clamping surfaces
- Open design gives positive location and easy access for glueing and nailing

Finish

- Stove enamelled ANANT Blue.

Packing

- Individually Cartoned.

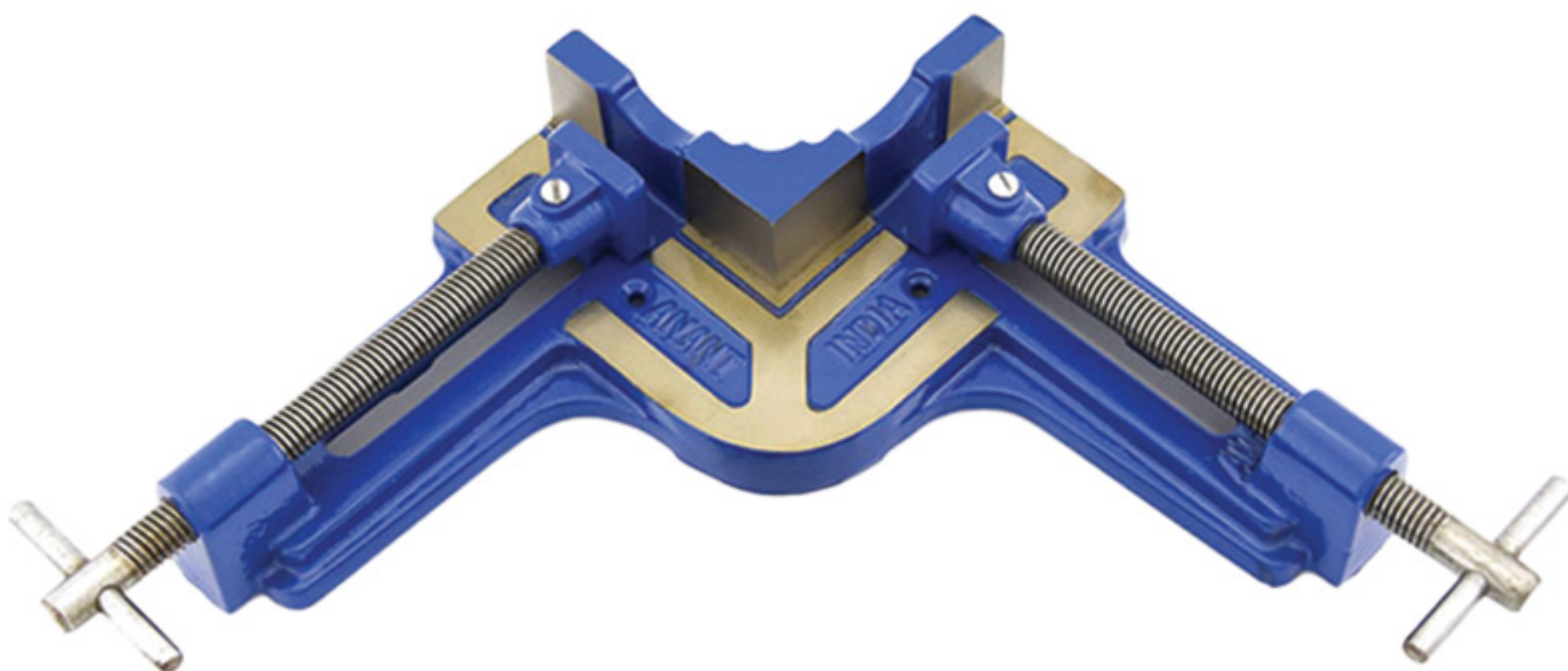


| Article No. | Particulars | Jaws Width | Approx. Weight | | Packing in Pcs. | Price per Pc. (in rs.) |
|-------------|-------------|------------|----------------|-------|-----------------|------------------------|
| | | | Pounds | Kg | | |
| AM 140 | 2" Mitre | 2 | 2.17 | 2.985 | 12 | 1907.00 |

AM 141 Corner Clamp 4.1/4"

Description:

The open design of the clamp makes it possible to nail and glue joints under cramping pressure. In addition to its function as a mitre framing clamp, it has many general purpose uses and is an ideal tool for pattern makers. The body mounting holes enable the clamp to be screwed to a bench. Capacity 2 INCH AND 4.1/4 INCH



Materials

- Solid grey iron cast bodies
- Precision machined clamping surfaces
- Open design gives positive location and easy access for glueing and nailing

Finish

- Stove enamelled ANANT Blue.

Packaging

- Individually Packed in Carton box.

| Article No. | Particulars | Jaws Width | Approx. Weight | | Packing in Pcs. | Price per Pc. (in rs.) |
|-------------|--------------|------------|----------------|-------|-----------------|------------------------|
| | | | Pounds | Kg | | |
| AM 141 | Corner Clamp | 4 1/4 | 6.91 | 3.135 | 6 | 2625.00 |

Guarantee:

All ANANT products are manufactured under the strict supervision of qualified and experienced technicians. As such they are guaranteed for performance and any other manufacturing defects.

Replacements:

Any part claimed to be defective must be returned to us with transportation charges prepaid. The part will be replaced free of charge and the transportation charges refunded, if on examination the part is found defective in material or workmanship. In case no defect is found in the part, the same will be returned to the senders at their cost. Except this, there is no other guarantee for our products and no selling agents or representative of the company is authorised to make any change in our above guarantee and the term of replacement.

Terms and Conditions:

1. Order will be subject to our confirmation.
2. Prices are ex-godown and subject to change without notice.
3. Goods & Service Tax extra.
4. Each tool is packed and dispatched after minute checking and as such is guaranteed.
5. 25% advance by demand draft with confirmed order and for balance payment, documents will be negotiated through nationalised bank only.
6. All payments even advance should be made direct to the company through M/O or payee's account cheques, company will not be responsible for any payment made to the agent.
7. In case of dispute, jurisdiction Jalandhar courts.



Anant Tools (Unit No-II) Pvt. Ltd.

- 📍 B-5, Focal Point, Jalandhar, Punjab- INDIA
- ☎ +91-75080 02200
- ☎ +91-181-2602474, 2601609, 2602010, 2601581
- ✉ aasheesh@ananttools.com, anil@ananttools.com
- 🌐 www.ananttools.com